



**EDI**  
**Implementation Guidelines**  
**EDIFACT**  
**DELFOR 97A**

**Contents**

DELFOR Principles.....	2
DELFOR Message Structure.....	4
Branching Diagram.....	11
Segment Description.....	12
Sample Message.....	33

## DELFOR Principles

The Delivery schedule message shall be used to:

- Specify firm delivery dates and the quantities scheduled (using segment SCC, data element Delivery plan status indicator, coded (4017) = "Firm").
- Specify forecasted production requirements (using SCC, data element Delivery plan status indicator, coded (4017) = either "commitment for manufacturing and material (2)" or "commitment for material (3)" or "planning/forecast (4)").
- Define the aspects that guarantee the synchronization between the supplying and receiving parties, thus allowing the supplier to plan for the resources necessary to fulfill customer requirements.

The Delivery schedule message provides the option to use one of two scheduling methods:

- Method 1: Delivery point driven

This is when for a given delivery point a number of different products are to be delivered. This means that address information triggers product information. Usage of segment group 7 is consequently required for the specification of delivery points.

- Method 2: product driven

This is when a given product is to be delivered to a number of different delivery points. This means that product information triggers address information, consequently, segment group 7 is not to be used. Delivery point information shall be specified in segment group 22.

An initiating Delivery schedule message is identified in the BGM with the "document/message name, coded (1001)" equal to "delivery schedule (241)" and "message function, coded (1225)" equal to "original (9)".

A subsequent message may be used to replace the schedule completely (quantities and dates). This is identified in the BGM with the "message function, coded (1225)" equal to "replace (5)". The replacement of a schedule requires the new schedule to totally override the previous one.

Alternatively the message may be used to partially alter the schedule. This is identified in the BGM with the "message function, coded (1225)" equal to "change (4)". Such alteration to the schedule shall adhere to the following recommendations:

1. All the date information in the QTY-DTM segment group shall be systematically used to identify the group to be changed.
2. How the information is to be changed:
  - a. To change a quantity - where the date information matches the current quantity is replaced with the new quantity.
  - b. To change a date - the current quantity has to be changed to zero and the new date information has to be given with the quantity from the former schedule.



- c. To change a date and quantity - the current quantity has to be changed to zero and the new date information has to be given with appropriate new quantity.
  - d. To delete quantities and dates - the current quantity has to be changed to zero.
  - e. To add quantities and dates - the new date information has to be given with the appropriate new quantity.
3. Unchanged dates and quantities - unchanged dates and quantities from the former schedule need to be resent.
  4. Delivered quantities - delivered quantities are automatically eliminated from the schedule.

The association to the previous Delivery schedule message is given by referencing the appropriate document/message number.

## DELFOR Message Structure

Pos.	Segment Description	M/C <sup>1</sup>	R <sup>2</sup>	Use <sup>3</sup>
0000	<b>UNB, Interchange header</b> To start, identify and specify an interchange.	M	1	M
0010	<b>UNH, Message header</b> A service segment starting and uniquely identifying a message. The message type code for the Delivery schedule message is DELFOR.  Note: Delivery schedule messages conforming to this document must contain the following data in segment UNH, composite S009:  Data element    0065    DELFOR 0052    D 0054    97A 0051    UN	M	1	M
0020	<b>BGM, Beginning of message</b> A segment for unique identification of the Delivery schedule message by means of its name and its number and its function (original, replacement, change).	M	1	M
0030	<b>DTM, Date/time/period</b> The DTM segment shall be specified at least once to identify the Delivery schedule message date. This segment can be included to indicate the beginning and the end date of the schedule.	M	10	M
0040	<b>FTX, Free text</b> A segment with free text in coded or clear form to give further clarification when required. In computer to computer exchanges such text will normally require the receiver to process this segment manually.	C	5	C
0050	<b>Segment group 1: RFF-DTM</b> A group of segments giving references relevant to the whole message, e.g. contract number.	C	10	C
0060	<b>RFF, Reference</b> A segment for giving references to the whole Delivery schedule message, e.g. contract, original message number (AGO), previous message number (ACW), import or export licence.	M	1	M
0070	<b>DTM, Date/time/period</b> Date or time, or date and time of the reference.	C	1	C
0080	<b>Segment group 2: NAD-SG3-SG4</b> A group of segments identifying parties by their names, addresses, locations, references and contacts relevant to the whole delivery schedule.	C	99	M
0090	<b>NAD, Name and address</b> A segment for identifying names and addresses and their functions relevant for the whole Delivery schedule. The principal parties for the Delivery schedule message shall be identified. The identification of the recipient of the goods must be given in the NAD segment in the detail section. It is recommended that where possible only the coded form of the party ID should be specified.	M	1	M
0100	<b>Segment group 3: RFF-DTM</b> A group of segments giving references relevant to the party.	C	10	C

<sup>1</sup> UN/EDIFACT: [M]andatory/[C]onditional

<sup>2</sup> [R]epeat count

<sup>3</sup> Use at Methode: [M]andatory/[C]onditional



Pos.	Segment Description	M/C <sup>1</sup>	R <sup>2</sup>	Use <sup>3</sup>
0110	<b>RFF, Reference</b> A segment giving references related to the party.	M	1	M
0120	<b>DTM, Date/time/period</b> Date/time/period of the reference.	C	1	C
0130	<b>Segment group 4: CTA-COM</b> A group of segments to identify person, function, or department and appropriate numbers to whom communication should be directed.	C	5	C
0140	<b>CTA, Contact information</b> A segment to identify the person, function, or department to whom communication should be directed.	M	1	M
0150	<b>COM, Communication contact</b> A segment identifying communication types and numbers for the person, function, or department identified in the CTA segment.	C	5	C
0160	<b>Segment group 5: TDT-DTM</b> A group of segments specifying details of the mode and means of transport, and date/time/period relating to the whole message. This group of segments is used only when the requested mode and means of transport deviates from the norm.	C	10	C
0170	<b>TDT, Details of transport</b> A segment specifying the carriage, and the mode and means of transport.	M	1	M
0180	<b>DTM, Date/time/period</b> A segment indicating the date/time/period details relating to the TDT segment.	C	5	C
0190	<b>Segment group 6: GIS-SG7-SG12</b> A group of segments providing details on delivery points and products and related information using one of both scheduling methods.  Method 1: delivery point driven This is when for a given delivery point a number of different products are to be delivered. This means that address information triggers product information. Usage of segment group 7 is consequently required for the specification of delivery points.  Method 2: product driven This is when a given product is to be delivered to a number of different delivery points. This means that product information triggers address information, Consequently, segment group 7 is not to be used. Delivery point information shall be specified in segment group 22.	C	9999	M
0200	<b>GIS, General indicator</b> A segment to indicate which method is used by the relevant processing indicator code.	M	1	M
0210	<b>Segment group 7: NAD-LOC-FTX-SG8-SG9-SG10-SG11</b> A group of segments needed to identify a delivery point and its attached information when the delivery point method is used.	C	1	M
0220	<b>NAD, Name and address</b> A segment for identifying the consignee.	M	1	M
0230	<b>LOC, Place/location identification</b> A segment identifying a specific location at the consignee address (e.g. dock, gate, ...) to which product, as specified in the LIN-Segment groups, should be delivered.	C	10	C



Pos.	Segment Description	M/C <sup>1</sup>	R <sup>2</sup>	Use <sup>3</sup>
0240	<b>FTX, Free text</b> A segment with free text in coded or clear form to give further clarification when required. In computer to computer exchanges such text will normally require the receiver to process this segment manually.	C	5	C
0250	<b>Segment group 8: RFF-DTM</b> A group of segments giving references relevant to the consignee.	C	10	C
0260	<b>RFF, Reference</b> A segment giving references related to the consignee.	M	1	M
0270	<b>DTM, Date/time/period</b> Date/time/period of the reference.	C	1	C
0280	<b>Segment group 9: DOC-DTM</b> A group of segments providing information relating to documents required for the consignee.	C	10	C
0290	<b>DOC, Document/message details</b> A segment describing the documents required for the specified consignee.	M	1	M
0300	<b>DTM, Date/time/period</b> Date/time/period of documents required.	C	10	C
0310	<b>Segment group 10: CTA-COM</b> A group of segments to identify a person, function or department at the consignee and appropriate numbers to whom communication should be directed.	C	5	C
0320	<b>CTA, Contact information</b> A segment to identify the person, function, or department to whom communication should be directed.	M	1	M
0330	<b>COM, Communication contact</b> Communication types and numbers for the person, function, or department identified in CTA segment.	C	5	C
0340	<b>Segment group 11: TDT-DTM</b> A group of segments specifying details of the mode and means of transport, and date and/or time of departure and destination relating to specified delivery point. This group of segments is used only when the requested mode and means of transport deviates from the norm.	C	10	C
0350	<b>TDT, Details of transport</b> A segment specifying the carriage, and the mode and means of transport.	M	1	M
0360	<b>DTM, Date/time/period</b> A segment indicating the date/time/period details of departure or arrival relating to the TDT segment.	C	5	C
0370	<b>Segment group 12: LIN-PIA-IMD-MEA-ALI-GIN-GIR-LOC-DTM-FTX-SG13-SG14-SG15-SG17-SG20-SG22</b> A group of segments providing details of the individual line items for both methods.	C	9999	M
0380	<b>LIN, Line item</b> A segment identifying the details of the product or service to be delivered, e.g. product identification. All other segments in the detail section following the LIN segment refer to the line item.	M	1	M
0390	<b>PIA, Additional product id</b> A segment providing additional product identification.	C	10	C



Pos.	Segment Description	M/C <sup>1</sup>	R <sup>2</sup>	Use <sup>3</sup>
0400	<b>IMD, Item description</b> A segment for describing the product or the service to be delivered. This segment should be used for products that cannot be identified by a product code or article number.	C	10	C
0410	<b>MEA, Measurements</b> A segment specifying physical measurements of the item to be delivered in original or unpacked form.	C	5	C
0420	<b>ALI, Additional information</b> A segment indicating that the line item is subject to special conditions due to origin, customs preference, or commercial factors.	C	5	C
0430	<b>GIN, Goods identity number</b> A segment providing identity numbers to be applied to the goods to be delivered, e.g. serial numbers.	C	999	C
0440	<b>GIR, Related identification numbers</b> A segment providing sets of related identification numbers for a line item, e.g. engine number, chassis number and transmission number for a vehicle.	C	999	C
0450	<b>LOC, Place/location identification</b> A segment identifying a specific location to which products, as specified in the LIN-Segment group, should be placed after delivery. This function should only be used with the delivery point driven method.	C	999	C
0460	<b>DTM, Date/time/period</b> Date/time/period associated with the line item, such as the date of the engineering change.	C	5	C
0470	<b>FTX, Free text</b> A segment with free text in coded or clear form to give further clarification, when required, to the line item to be delivered. In computer to computer exchanges such text will normally require the receiver to process this segment manually.	C	5	C
0480	<b>Segment group 13: RFF-DTM</b> A group of segments giving references related to the line item and where necessary, their dates.	C	10	M
0490	<b>RFF, Reference</b> A segment for identifying references to the line item, e.g. a contract and its appropriate line item, original message number, previous message number if different per line item.	M	1	M
0500	<b>DTM, Date/time/period</b> Date/time/period of the reference.	C	1	C
0510	<b>Segment group 14: TDT-DTM</b> A group of segments specifying details of the mode and means of transport, and date/time/period related to the specified transport details. When using the delivery point method this segment group overrides for the product identified in the LIN segment the information specified in segment group 11.	C	10	C
0520	<b>TDT, Details of transport</b> A segment specifying the carriage, and the mode and means of transport of the goods for the specified location.	M	1	M
0530	<b>DTM, Date/time/period</b> A segment indicating the date/time/period details relating to the TDT segment.	C	5	C



Pos.	Segment Description	M/C <sup>1</sup>	R <sup>2</sup>	Use <sup>3</sup>
0540	<b>Segment group 15: QTY-DTM-SG16</b> A group of segments specifying product quantities and associated dates not related to schedules and where relevant, references.	C	10	C
0550	<b>QTY, Quantity</b> A segment to specify pertinent quantities not related to schedule(s), e.g. cumulative quantity, last quantity considered.	M	1	M
0560	<b>DTM, Date/time/period</b> A segment indicating the date/time/period details relating to the quantity.	C	2	C
0570	<b>Segment group 16: RFF-DTM</b> A group of segments giving references related to the quantity and where necessary, their date.	C	10	C
0580	<b>RFF, Reference</b> A segment for identifying reference to the quantity, e.g. despatch advice number.	M	1	M
0590	<b>DTM, Date/time/period</b> Date/time/period of the reference.	C	1	C
0600	<b>Segment group 17: SCC-SG18</b> A group of segments specifying the schedule information for the product identified in the LIN segment. With the delivery point driven method this segment group provides the schedule for the identified delivery point and product. With the product driven method this segment group can be used to summarise all schedules provided with the subsequent delivery point information given in segment group 22.	C	999	M
0610	<b>SCC, Scheduling conditions</b> A segment specifying the status of the schedule. Optionally a delivery pattern can be established, e.g. firm or proposed delivery pattern.	M	1	M
0620	<b>Segment group 18: QTY-DTM-SG19</b> A group of segments specifying product quantities and associated dates.	C	999	M
0630	<b>QTY, Quantity</b> A segment to specify scheduled quantities which may be related to schedule(s) and, or pattern established in the following DTM segment, e.g. delivery quantity for a specified date.	M	1	M
0640	<b>DTM, Date/time/period</b> A segment indicating date/time/period details relating to the given quantity.	C	2	M
0650	<b>Segment group 19: RFF-DTM</b> A group of segments for specifying references associated with the given schedule's quantity and date and where necessary the reference dates.	C	10	C
0660	<b>RFF, Reference</b> A segment to provide reference for the given schedule's quantity and date.	M	1	M
0670	<b>DTM, Date/time/period</b> Date/time/period of the reference.	C	1	C
0680	<b>Segment group 20: PAC-MEA-QTY-DTM-SG21</b> A group of segments identifying the packaging, physical dimensions, and marks and numbers for goods referenced in the line item to be delivered.	C	99	M
0690	<b>PAC, Package</b> A segment specifying the number of package units and the type of packaging for the line item, e.g. pallet.	M	1	M





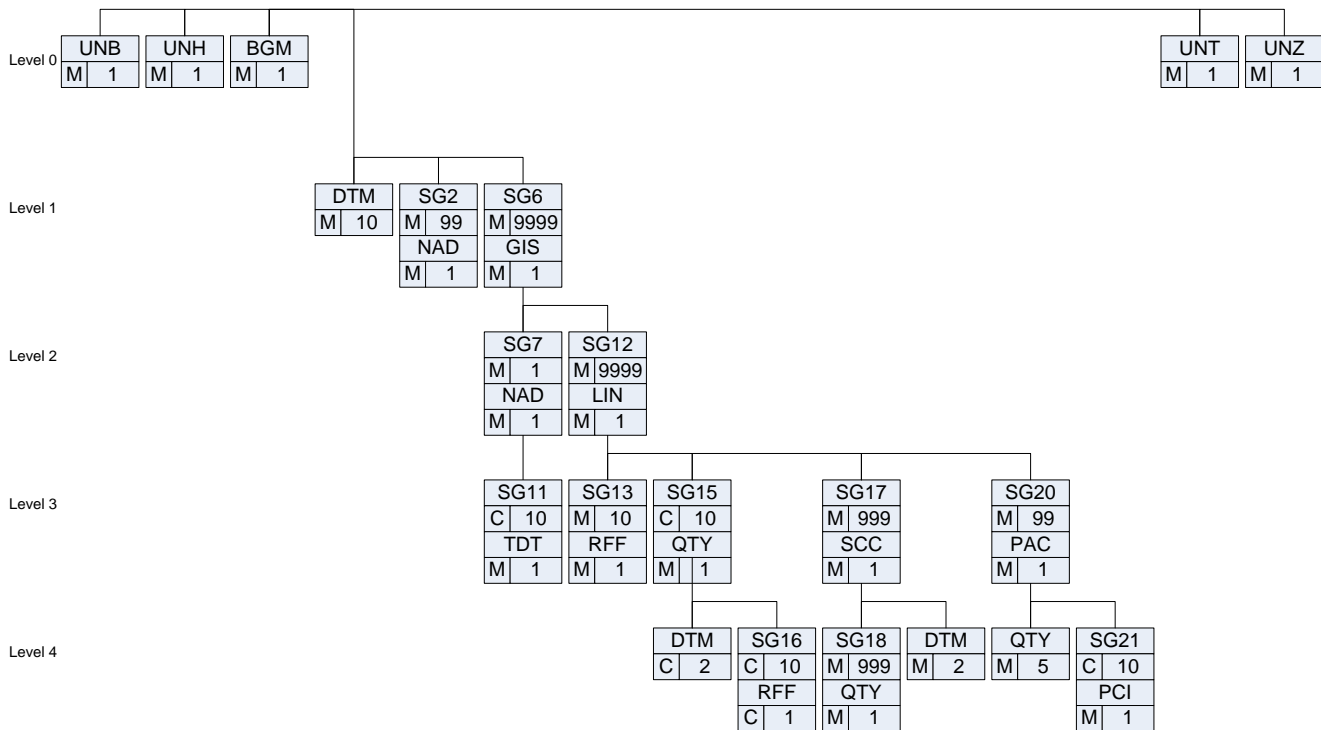
Pos.	Segment Description	M/C <sup>1</sup>	R <sup>2</sup>	Use <sup>3</sup>
0700	<b>MEA, Measurements</b> A segment specifying physical measurements of packages described in the PAC segment, e.g. pallet dimensions.	C	10	C
0710	<b>QTY, Quantity</b> A segment to specify pertinent quantities relating to the physical units (packages) described in the PAC segment.	C	5	M
0720	<b>DTM, Date/time/period</b> A segment specifying date/time/period details relating to the physical units (packages) described in the PAC segment, e.g. packaging specification date.	C	5	C
0730	<b>Segment group 21: PCI-GIN</b> A group of segments identifying markings and labels and if relevant package numbers.	C	10	C
0740	<b>PCI, Package identification</b> A segment specifying markings and labels used on individual physical units (packages) described in the PAC segment.	M	1	M
0750	<b>GIN, Goods identity number</b> A segment providing identity numbers to be applied to the packages to be delivered.	C	10	C
0760	<b>Segment group 22: NAD-LOC-FTX-SG23-SG24-SG25-SG27-SG30</b> A group of segments providing details of the individual delivery points for the given product.	C	999	C
0770	<b>NAD, Name and address</b> A segment for identifying names and addresses relevant to the delivery point.	M	1	M
0780	<b>LOC, Place/location identification</b> A segment identifying a specific location at the address (e.g. dock, gate, ...).	C	10	C
0790	<b>FTX, Free text</b> A segment with free text in coded or clear form to give further clarification when required. In computer to computer exchanges such text will normally require the receiver to process this segment manually.	C	5	C
0800	<b>Segment group 23: DOC-DTM</b> A group of segments providing information relating to documents required for the delivery point.	C	10	C
0810	<b>DOC, Document/message details</b> A segment providing information relating to the documents required for specified delivery points.	M	1	M
0820	<b>DTM, Date/time/period</b> Date/time/period of documents required.	C	1	C
0830	<b>Segment group 24: CTA-COM</b> A group of segments to identify a person, function or department and appropriate numbers to whom communication should be directed. The information specified in this group is related to the delivery point.	C	5	C
0840	<b>CTA, Contact information</b> A segment to identify the person, function, or department to whom communication should be directed.	M	1	M
0850	<b>COM, Communication contact</b> A segment to identify communication types and numbers for the person, function, or department identified in CTA segment.	C	5	C



Pos.	Segment Description	M/C <sup>1</sup>	R <sup>2</sup>	Use <sup>3</sup>
0860	<b>Segment group 25: QTY-DTM-SG26</b> A group of segments specifying product quantities and associated dates and where relevant, references relating to the delivery point.	C	10	C
0870	<b>QTY, Quantity</b> A segment to specify pertinent quantities not related to schedule(s), e.g. cumulative quantity, last quantity considered.	M	1	M
0880	<b>DTM, Date/time/period</b> A segment indicating the date/time/period details relating to the given quantity.	C	2	C
0890	<b>Segment group 26: RFF-DTM</b> A group of segments giving references related to the quantity and where necessary, their dates.	C	10	C
0900	<b>RFF, Reference</b> A segment for identifying references to the quantity, e.g. despatch advice number.	M	1	M
0910	<b>DTM, Date/time/period</b> Date/time/period of the reference.	C	1	C
0920	<b>Segment group 27: SCC-SG28</b> A group of segments specifying scheduling information detailing quantities and date for the given delivery point. This segment group also specifies references and their associated dates related to the schedule as required for the delivery point.	M	999	M
0930	<b>SCC, Scheduling conditions</b> A segment specifying the status of the schedule. Optionally a delivery pattern can be established, e.g. firm or proposed delivery schedule for a weekly pattern.	M	1	M
0940	<b>Segment group 28: QTY-DTM-SG29</b> A group of segments specifying product quantities and associated dates.	M	999	M
0950	<b>QTY, Quantity</b> A segment to specify pertinent quantities which may relate to schedule(s) and/or pattern established in the SCC segment, e.g. delivery quantity for a specified date.	M	1	M
0960	<b>DTM, Date/time/period</b> A segment indicating the date/time/period details relating to the given quantity.	C	2	C
0970	<b>Segment group 29: RFF-DTM</b> A group of segments for specifying references associated with the given schedule and delivery point and where necessary their dates.	C	10	C
0980	<b>RFF, Reference</b> A segment to provide references for the given schedules and dates.	M	1	M
0990	<b>DTM, Date/time/period</b> Date/time/period of the reference.	C	1	C
1000	<b>Segment group 30: TDT-DTM</b> A group of segments specifying details of the mode and means of transport, and date/time/period relating to the delivery point. This segment's information overrides transport detail information for the identified delivery point given in segment group 5 or segment group 14.	C	10	C

Pos.	Segment Description	M/C <sup>1</sup>	R <sup>2</sup>	Use <sup>3</sup>
1010	<b>TDT, Details of transport</b> A segment specifying the carriage, and the mode and means of transport of the goods for the delivery point.	M	1	M
1020	<b>DTM, Date/time/period</b> A segment indicating the date/time/period relating to the TDT segment.	C	5	C
1030	<b>UNT, Message trailer</b> A service segment ending a message, giving the total number of segments in the message and the control reference number of the message.	M	1	M
1040	<b>UNZ, Interchange trailer</b> To end and check the completeness of an interchange.	M	1	M

## Branching Diagram





## Segment Description

**Segment:** UNB, Interchange header

**Position:** 0000

**Group:**

**Usage:** Mandatory

**Description of codes and data in segment:**

Group	Ref.	Format	Description	M/C	Use
UNB010	S001		SYNTAX IDENTIFIER	M	M
	0001	A4	Syntax identifier A 3 upper case Controlling Agency and A 1 level. <b>Use: "UNOA"</b>	M	M
	0002	N1	Syntax version number <b>Use: "2"</b>	M	M
UNB020	S002		INTERCHANGE SENDER	M	M
	0004	AN..35	Sender identification Code or name as specified in interchange agreement. <b>Use: Refer to agreed EDI parameters</b>	M	M
	0007	AN..4	Partner identification code qualifier Used with sender identification code. <b>Use: Refer to agreed EDI parameters</b>	C	C
	0008	AN..14	Address for reverse routing	C	-
UNB030	S003		INTERCHANGE RECIPIENT	M	M
	0010	AN..35	Recipient Identification Code or name as specified in interchange agreement. <b>Use: Refer to agreed EDI parameters</b>	M	M
	0007	AN ..4	Partner identification code qualifier Used with recipient identification code. <b>Use: Refer to agreed EDI parameters</b>	C	C
	0014	AN ..14	Routing address	C	-
UNB040	S004		DATE/TIME OF PREPARATION	M	M
	0017	N 6	Date Local date when interchange was created. <b>Use: Date in CCMDD format</b>	M	M
	0019	N 4	Time Local time when interchange was created. <b>Use: Time in HHMM format</b>	M	M
UNB050	0020	AN ..14	INTERCHANGE CONTROL REFERENCE Unique reference assigned by sender. Usually assigned by converter program. <b>Use: Unique transmissions reference number</b>	M	M
UNB060	S005		RECIPIENTS REFERENCE, PASSWORD	C	-
	0022	AN ..14	Recipient's reference/password	M	-
	0025	AN 2	Recipient's reference/password qualifier	C	-
UNB070	0026	AN ..14	APPLICATION REFERENCE	C	-
UNB080	0029	A 1	PROCESSING PRIORITY CODE	C	-
UNB090	0031	N 1	ACKNOWLEDGEMENT REQUEST	C	-
UNB100	0032	AN ..35	COMMUNICATIONS AGREEMENT ID	C	-
UNB110	0035	N 1	TEST INDICATOR <b>Use: "1" if the interchange is a test. Otherwise not used.</b>	C	C

**Segment:** UNH, Message header

**Position:** 0010

**Group:**

**Usage:** Mandatory

**Description of codes and data in segment:**

Group	Ref.	Format	Description	M/C	Use
UNH010	0062	AN ..14	MESSAGE REFERENCE NUMBER A sender's unique message reference. <b>Use: Unique message reference number</b>	M	M
UNH020	S009		MESSAGE IDENTIFIER	M	M
	0065	AN ..6	Message type Type of message being transmitted. <b>Use: "DELFOR"</b>	M	M
	0052	AN ..3	Message version number Version number of the message type. <b>Use: "D"</b>	M	M
	0054	AN ..3	Message release number Release number within current version number. <b>Use: "97A"</b>	M	M
	0051	AN ..2	Controlling agency Code to identify the agency controlling the specification, maintenance and publication of the message type. <b>Use: "UN"</b>	M	M
	0057	AN ..6	Association assigned code A code assigned by the association responsible for the design and maintenance of the message type.	C	C
UNH030	0068	AN ..35	COMMON ACCESS REFERENCE	C	-
UNH040	S010		STATUS OF THE TRANSFER	C	-
	0070	N ..2	Sequence of transfers	M	-
	0073	A 1	First and last transfer	C	-



Segment: BGM, Beginning of message

Position: 0020

Group:

Usage: Mandatory

Description of codes and data in segment:

Group	Ref.	Format	Description	M/C	Use
BGM010	C002		DOCUMENT/MESSAGE NAME Identification of a type of document/message by code or name. Code preferred.	C	M
	1001	AN ..3	Document/message name, coded Document/message identifier expressed in code. <b>Use: "241" Delivery schedule</b>	C	M
	1131	AN ..3	Code list qualifier Identification of a code list.	C	C
	3055	AN ..3	Code list responsible agency, coded Code identifying the agency responsible for a code list.	C	C
	1000	AN ..35	Document/message name Plain language identifier specifying the function of a document/message.	C	C
BGM020	C106		DOCUMENT/MESSAGE IDENTIFICATION Identification of a document/message by its number and eventually its version or revision.	C	M
	1004	AN 35	Document/message number Reference number assigned to the document/message by the issuer. <b>Use: Delivery schedule number assigned by Methode</b>	C	M
	1056	AN ..9	Version To specify the version number or name of an object.	C	C
	1060	AN 6	Revision number To specify a revision number.	C	C
BGM030	1225	AN ..3	MESSAGE FUNCTION, CODED Code indicating the function of the message.	C	C
BGM040	4343	AN ..3	RESPONSE TYPE, CODED Code specifying the type of acknowledgment required or transmitted.	C	C

**Segment:** DTM, Date/time/period

**Position:** 0030

**Group:**

**Usage:** Mandatory

**Description of codes and data in segment:**

Group	Ref.	Format	Description	M/C	Use
DTM010	C507		DATE/TIME/PERIOD Date and/or time, or period relevant to the specified date/time/period type.	M	M
	2005	AN ..3	Date/time/period qualifier Code giving specific meaning to a date, time or period. <b>Use: "137" Document/message date/time. Date/time when a document/message is issued.</b> <b>"158" Horizon start date. The first date of a period forming a horizon.</b> <b>"159" Horizon end date. The last date of a period forming a horizon.</b>	M	M
	2380	AN ..35	Date/time/period The value of a date, a date and time, a time or of a period in a specified representation. <b>Use: Date in CCYMMDD format</b>	C	M
	2379	AN ..3	Date/time/period format qualifier Specification of the representation of a date, a date and time or of a period. <b>Use: "102" CCYMMDD Calendar date. C=Century; Y=Year; M=Month; D=Day.</b>	C	M



**Segment:** NAD, Name and address  
**Position:** 0090  
**Group:** Segment group 2: NAD-SG3-SG4  
**Usage:** Mandatory

**Description of codes and data in segment:**

Group	Ref.	Format	Description	M/C	Use
NAD010	3035	AN ..3	PARTY QUALIFIER Code giving specific meaning to a party. <b>Use: "MI" Planning schedule/material release issuer. Code for Methode will be provided in 3039.</b> <b>"SF" Ship from. Identification of the party from where goods will be or have been shipped. Code assigned by Methode for supplier's ship from location will be provided in 3039.</b> <b>"SU" Supplier. Party which manufactures or otherwise has possession of goods, and consigns or makes them available in trade. Code assigned by Methode for supplier will be provided in 3039.</b>	M	M
NAD020	C082		PARTY IDENTIFICATION DETAILS Identification of a transaction party by code.	C	M
	3039	AN ..35	Party id. Identification Code identifying a party involved in a transaction. <b>Use: Methode's material issuer code, ship from code or supplier code depending on code specified in 3035</b>	M	M
	1131	AN ..3	Code list qualifier Identification of a code list.	C	C
	3055	AN ..3	Code list responsible agency, coded Code identifying the agency responsible for a code list. <b>Use: "92" Assigned by buyer or buyer's agent</b>	C	C
NAD030	C058		NAME AND ADDRESS Unstructured name and address: one to five lines.	C	C
	3124	AN ..35	Name and address line Free form name and address description.	M	M
	3124	AN ..35	Name and address line Free form name and address description.	C	C
	3124	AN ..35	Name and address line Free form name and address description.	C	C
	3124	AN ..35	Name and address line Free form name and address description.	C	C
	3124	AN ..35	Name and address line Free form name and address description.	C	C





NAD040	C080		<b>PARTY NAME</b> Identification of a transaction party by name, one to five lines. Party name may be formatted.	C	C
	3036	AN ..35	Party name Name of a party involved in a transaction.	M	M
	3036	AN ..35	Party name Name of a party involved in a transaction.	C	C
	3036	AN ..35	Party name Name of a party involved in a transaction.	C	C
	3036	AN ..35	Party name Name of a party involved in a transaction.	C	C
	3036	AN ..35	Party name Name of a party involved in a transaction.	C	C
	3045	AN ..3	Party name format, coded Specification of the representation of a party name.	C	C
NAD050	C059		<b>STREET</b> Street address and/or PO Box number in a structured address: one to three lines.	C	C
	3042	AN ..35	Street and number/p.o. box Street and number in plain language, or Post Office Box No.	M	MC
	3042	AN ..35	Street and number/p.o. box Street and number in plain language, or Post Office Box No.	C	C
	3042	AN ..35	Street and number/p.o. box Street and number in plain language, or Post Office Box No.	C	C
	3042	AN ..35	Street and number/p.o. box Street and number in plain language, or Post Office Box No.	C	C
NAD060	3164	AN ..35	<b>CITY NAME</b> Name of a city (a town, a village) for addressing purposes.	C	C
NAD070	3229	AN ..9	<b>COUNTRY SUB-ENTITY IDENTIFICATION</b> Identification of the name of sub-entities (state, province) defined by appropriate governmental agencies.	C	C
NAD080	3251	AN ..9	<b>POSTCODE IDENTIFICATION</b> Code defining postal zones or addresses.	C	C
NAD090	3207	AN ..3	<b>COUNTRY, CODED</b> Identification of the name of a country or other geographical entity as specified in ISO 3166.	C	C



**Segment:** GIS, General indicator  
**Position:** 0200  
**Group:** Segment group 6: GIS-SG7-SG12  
**Usage:** Mandatory

**Description of codes and data in segment:**

Group	Ref.	Format	Description	M/C	Use
GIS010	C529		PROCESSING INDICATOR Type of process indication.	M	M
	7365	AN ..3	Processing indicator, coded Identifies the value to be attributed to indicators required by the processing system. <b>Use: "37" Complete information</b>	M	M
	1131	AN ..3	Code list qualifier Identification of a code list.	C	C
	3055	AN ..3	Code list responsible agency, coded Code identifying the agency responsible for a code list.	C	C
	7187	AN ..17	Process type identification Specification of a process or sub-process.	C	C

**Segment:** NAD, Name and address  
**Position:** 0220  
**Group:** Segment group 7: NAD-LOC-FTX-SG8-SG9-SG10-SG11  
**Usage:** Mandatory

**Description of codes and data in segment:**

Group	Ref.	Format	Description	M/C	Use
NAD010	3035	AN ..3	PARTY QUALIFIER Code giving specific meaning to a party. <b>Use: "ST" Ship to. Identification of the party to where goods will be or have been shipped. Methode's ship to location code will be provided in 3039.</b>	M	M
NAD020	C082		PARTY IDENTIFICATION DETAILS Identification of a transaction party by code.	C	M
	3039	AN ..35	Party id. Identification Code identifying a party involved in a transaction. <b>Use: Methode's ship to code</b>	M	M
	1131	AN ..3	Code list qualifier Identification of a code list.	C	C
	3055	AN ..3	Code list responsible agency, coded Code identifying the agency responsible for a code list. <b>Use: "92" Assigned by buyer or buyer's agent</b>	C	C



NAD030	C058		NAME AND ADDRESS Unstructured name and address: one to five lines.	C	C
	3124	AN ..35	Name and address line	M	M
	3124	AN ..35	Free form name and address description.	C	C
	3124	AN ..35	Name and address line	C	C
	3124	AN ..35	Free form name and address description.	C	C
	3124	AN ..35	Name and address line	C	C
NAD040	C080		PARTY NAME Identification of a transaction party by name, one to five lines. Party name may be formatted.	C	C
	3036	AN ..35	Party name	M	M
	3036	AN ..35	Name of a party involved in a transaction.	C	C
	3036	AN ..35	Party name	C	C
	3036	AN ..35	Name of a party involved in a transaction.	C	C
	3036	AN ..35	Party name	C	C
	3036	AN ..35	Name of a party involved in a transaction.	C	C
	3045	AN ..3	Party name format, coded Specification of the representation of a party name.	C	C
NAD050	C059		STREET Street address and/or PO Box number in a structured address: one to three lines.	C	C
	3042	AN ..35	Street and number/p.o. box	M	MC
	3042	AN ..35	Street and number in plain language, or Post Office Box No.	C	C
	3042	AN ..35	Street and number/p.o. box	C	C
	3042	AN ..35	Street and number in plain language, or Post Office Box No.	C	C
	3042	AN ..35	Street and number/p.o. box	C	C
NAD060	3164	AN ..35	CITY NAME Name of a city (a town, a village) for addressing purposes.	C	C
NAD070	3229	AN ..9	COUNTRY SUB-ENTITY IDENTIFICATION Identification of the name of sub-entities (state, province) defined by appropriate governmental agencies.	C	C
NAD080	3251	AN ..9	POSTCODE IDENTIFICATION Code defining postal zones or addresses.	C	C
NAD090	3207	AN ..3	COUNTRY, CODED Identification of the name of a country or other geographical entity as specified in ISO 3166.	C	C



**Segment:** TDT, Details of transport  
**Position:** 0350  
**Group:** Segment group 11: TDT-DTM  
**Usage:** Conditional

**Description of codes and data in segment:**

Group	Ref.	Format	Description	M/C	Use
TDT010	8051	AN ..3	TRANSPORT STAGE QUALIFIER Qualifier giving a specific meaning to the transport details. <b>Use: "12" At departure. Transport by which goods are moved from the place of departure.</b>	M	M
TDT020	8028	AN ..17	CONVEYANCE REFERENCE NUMBER Unique reference given by the carrier to a certain journey or departure of a means of transport (generic term).	C	C
TDT030	C220		MODE OF TRANSPORT Method of transport code or name. Code preferred.	C	C
	8067	AN ..3	Mode of transport, coded Coded method of transport used for the carriage of the goods.	C	M
	8066	AN ..17	Mode of transport Method of transport used for the carriage of the goods.	C	C
TDT040	C228		TRANSPORT MEANS Code and/or name identifying the type of means of transport.	C	C
	8179	AN ..8	Type of means of transport identification Code defining the type of the means of transport being utilized.	C	C
	8178	AN ..17	Type of means of transport Description of the type of the means of transport being utilized.	C	C
TDT050	C040		CARRIER Identification of a carrier by code and/or by name. Code preferred.	C	C
	3127	AN ..17	Carrier identification Identification of party undertaking or arranging transport of goods between named points. <b>Use: Code assigned to carrier.</b>	C	C
	1131	AN ..3	Code list qualifier Identification of a code list.	C	C
	3055	AN ..3	Code list responsible agency, coded Code identifying the agency responsible for a code list. <b>Use: "92" Assigned by buyer or buyer's agent</b>	C	C
	3128	AN ..35	Carrier name Name of party undertaking or arranging transport of goods between named points. <b>Use: Carrier's descriptive name</b>	C	C
TDT060	8101	AN ..3	TRANSIT DIRECTION, CODED Identification of the point of origin and point of direction.	C	C



TDT070	C401		EXCESS TRANSPORTATION INFORMATION To provide details of reason for, and responsibility for, use of transportation other than normally utilized.	C	C
	8457	AN ..3	Excess transportation reason, coded	M	M
	8459	AN ..3	Indication of reason for excess transportation. Excess transportation responsibility, coded	M	M
	7130	AN ..17	Indication of responsibility for excess transportation. Customer authorization number Customer provided authorization number to allow supplier to ship goods under specific freight conditions. This number will be transmitted back to customer in the dispatch advice message.	C	C
TDT080	C222		TRANSPORT IDENTIFICATION Code and/or name identifying the means of transport.	C	C
	8213	AN ..9	Id. of means of transport identification	C	C
	1131	AN ..3	Identification of the means of transport by name or number. Code list qualifier	C	C
	3055	AN ..3	Identification of a code list. Code list responsible agency, coded	C	C
	8212	AN ..35	Code identifying the agency responsible for a code list. Id. of the means of transport	C	C
	8453	AN ..3	Identification of the means of transport by name or number. Nationality of means of transport, coded Coded name of the country in which a means of transport is registered.	C	C
TDT090	8281	AN ..3	TRANSPORT OWNERSHIP, CODED Code indicating the ownership of the means of transport.	C	C

**Segment:** LIN, Line item

**Position:** 0380

**Group:** Segment group 12: LIN-PIA-IMD-MEA-ALI-GIN-GIR-LOC-DTM-FTX-SG13-SG14-SG15-SG17-SG20-SG22

**Usage:** Mandatory

**Description of codes and data in segment:**

Group	Ref.	Format	Description	M/C	Use
LIN010	1082	AN ..6	LINE ITEM NUMBER Serial number designating each separate item within a series of articles.	C	C
LIN020	1229	AN ..3	ACTION REQUEST/NOTIFICATION, CODED Code specifying the action to be taken or already taken.	C	C
LIN030	C212		ITEM NUMBER IDENTIFICATION Goods identification for a specified source.	C	M
	7140	AN ..35	Item number A number allocated to a group or item. <b>Use: Methode's item number</b>	C	M
	7143	AN ..3	Item number type, coded Identification of the type of item number. <b>Use: "IN" Buyer's item number</b>	C	M
	1131	AN ..3	Code list qualifier Identification of a code list.	C	C
	3055	AN ..3	Code list responsible agency, coded Code identifying the agency responsible for a code list.	C	C
LIN040	C829		SUB-LINE INFORMATION To provide an indication that a segment or segment group is used to contain sub-line or sub-line item information and to optionally enable the sub-line to be identified.	C	C
	5495	AN ..3	Sub-line indicator, coded Indication that the segment and/or segment group is used for sub-line item information.	C	C
	1082	AN ..6	Line item number Serial number designating each separate item within a series of articles.	C	C
LIN050	1222	N ..2	CONFIGURATION LEVEL Number indicating the level of an object which is in a hierarchy.	C	C
LIN060	7083	AN ..3	CONFIGURATION, CODED Code indicating the status of the sub-line item in the configuration.	C	C



**Segment:** RFF, Reference  
**Position:** 0490  
**Group:** Segment group 13: RFF-DTM  
**Usage:** Mandatory

**Description of codes and data in segment:**

Group	Ref.	Format	Description	M/C	Use
RFF010	C506		REFERENCE	M	M
	1153	AN ..3	Identification of a reference. Reference qualifier Code giving specific meaning to a reference segment or areference number. <b>Use: "ON" Order number (purchase). Reference number assigned by the buyer to an order.</b>	M	M
	1154	AN ..35	Reference number Identification number the nature and function of which can bequalified by an entry in data element 1153 Referencequalifier. <b>Use: Methode's order number for referenced item.</b>	C	M
	1156	AN ..6	Line number Number of the line in the document/message referenced in 1154Reference number.	C	C
	4000	AN ..35	Reference version number To uniquely identify a reference by its revision number.	C	C

**Segment:** QTY, Quantity  
**Position:** 0550  
**Group:** Segment group 15: QTY-DTM-SG16  
**Usage:** Conditional

**Description of codes and data in segment:**

Group	Ref.	Format	Description	M/C	Use
QTY010	C186		QUANTITY DETAILS	M	M
	6063	AN ..3	Quantity information in a transaction, qualified when relevant. Quantity qualifier Code giving specific meaning to a quantity. <b>Use: "48" Received quantity. The quantity which has been received on last ASN/invoice considered.</b> <b>"70" Cumulative quantity received. Cumulative quantity of all deliveries of this articlereceived by the buyer.</b> <b>"71" Cumulative quantity ordered. Cumulative quantity of all deliveries, outstanding andscheduled orders.</b>	M	M
	6060	N ..15	Quantity Numeric value of a quantity. <b>Use: Numeric value expressing quantity received on last ASN/invoice considered, cumulative quantity received or cumulative quantity required depending on code in 6063.</b>	M	M
	6411	AN ..3	Measure unit qualifier Code giving specific meaning to a quantity. <b>Use: "PCE" Pieces</b> <b>"MTR" Meter</b> <b>"LTR" Liter</b> <b>"KGM" Kilogram</b>	C	C



**Segment:** DTM, Date/time/period  
**Position:** 0560  
**Group:** Segment group 15: QTY-DTM-SG16  
**Usage:** Conditional

**Description of codes and data in segment:**

Group	Ref.	Format	Description	M/C	Use
DTM010	C507		DATE/TIME/PERIOD Date and/or time, or period relevant to the specified date/time/period type.	M	M
	2005	AN ..3	Date/time/period qualifier Code giving specific meaning to a date, time or period. <b>Use: "50" Goods receipt date/time. Date/time upon which the goods were received by a given party if value in 6063 of QTY segment at position 550 is "48".</b> <b>"51" Cumulative quantity start date. First Date for accumulation of delivery quantities if value in 6063 of QTY segment at position 550 is "70" or "71".</b>	M	M
	2380	AN ..35	Date/time/period The value of a date, a date and time, a time or of a period in a specified representation. <b>Use: Date in CCYMMDD format</b>	C	M
	2379	AN ..3	Date/time/period format qualifier Specification of the representation of a date, a date and time or of a period. <b>Use: "102" CCYMMDD Calendar date. C=Century; Y=Year; M=Month; D=Day.</b>	C	M



**Segment:** RFF, Reference  
**Position:** 0580  
**Group:** Segment group 16: RFF-DTM  
**Usage:** Conditional

**Description of codes and data in segment:**

Group	Ref.	Format	Description	M/C	Use
RFF010	C506		REFERENCE	M	M
	1153	AN ..3	Identification of a reference. Reference qualifier Code giving specific meaning to a reference segment or areference number. <b>Use: "IV" Invoice number. Reference number assigned            by the seller to aCommercial Invoice.            "AAK" Despatch advice number. Reference number            assigned by issuing party to a despatchadvice.</b>	M	M
	1154	AN ..35	Reference number Identification number the nature and function of which can bequalified by an entry in data element 1153 Referencequalifier. <b>Use: Last supplier's despatch advice number or invoice            number considered in this delivery schedule.</b>	C	M
	1156	AN ..6	Line number Number of the line in the document/message referenced in 1154Reference number.	C	C
	4000	AN ..35	Reference version number To uniquely identify a reference by its revision number.	C	C



**Segment:** SCC, Scheduling conditions  
**Position:** 0610  
**Group:** Segment group 17: SCC-SG18  
**Usage:** Mandatory

**Description of codes and data in segment:**

Group	Ref.	Format	Description	M/C	Use
SCC010	4017	AN ..3	DELIVERY PLAN STATUS INDICATOR, CODED Code indicating the level of commitment of schedule information. <b>Use: "1" Firm. Indicates that the scheduling information is a firm commitment.</b> <b>"2" Commitment for manufacturing and material. Authorizes the supplier to start the manufacturing of goods.</b> <b>"3" Commitment for material. Authorizes the manufacturer to order material required for manufacturing specified goods.</b> <b>"4" Planning/forecast</b> <b>"10" Immediate. Indicates that the scheduling information is for immediate execution.</b>	M	M
SCC020	4493	AN ..3	DELIVERY REQUIREMENTS, CODED Indication of general instruction for delivery.	C	C
SCC030	C329		PATTERN DESCRIPTION	C	C
	2013	AN ..3	Shipment, delivery or production interval pattern and timing. Frequency, coded Code specifying interval grouping of the delivery, production, etc. of the schedule.	C	C
	2015	AN ..3	Despatch pattern, coded Code specifying the days/periods for routine shipments or deliveries.	C	C
	2017	AN ..3	Despatch pattern timing, coded Code specifying the detailed times for routine shipments or deliveries within data element 2015 Despatch pattern, coded.	C	C



**Segment:** QTY, Quantity  
**Position:** 0630  
**Group:** Segment group 18: QTY-DTM-SG19  
**Usage:** Mandatory

**Description of codes and data in segment:**

Group	Ref.	Format	Description	M/C	Use
QTY010	C186		QUANTITY DETAILS	M	M
	6063	AN ..3	Quantity information in a transaction, qualified when relevant. Quantity qualifier Code giving specific meaning to a quantity. <b>Use: "113" Quantity to be delivered</b>	M	M
	6060	N ..15	Quantity Numeric value of a quantity. <b>Use: Numeric value expressing quantity required.</b>	M	M
	6411	AN ..3	Measure unit qualifier Code giving specific meaning to a quantity. <b>Use: "PCE" Pieces "MTR" Meter "LTR" Liter "KGM" Kilogram</b>	C	C

**Segment:** DTM, Date/time/period  
**Position:** 0640  
**Group:** Segment group 18: QTY-DTM-SG19  
**Usage:** Mandatory

**Description of codes and data in segment:**

Group	Ref.	Format	Description	M/C	Use
DTM010	C507		DATE/TIME/PERIOD	M	M
	2005	AN ..3	Date and/or time, or period relevant to the specified date/time/period type. Date/time/period qualifier Code giving specific meaning to a date, time or period. <b>Use: "2" Delivery date/time, requested. Date on which buyer requests goods to be delivered. "10" Shipment date/time, requestedDate on which goods should be shipped or despatched bythe supplier.</b>	M	M
	2380	AN ..35	Date/time/period The value of a date, a date and time, a time or of a period in a specified representation. <b>Use: Date in CCYYMMDD format</b>	C	M
	2379	AN ..3	Date/time/period format qualifier Specification of the representation of a date, a date and time or of a period. <b>Use: "102" CCYYMMDD Calendar date. C=Century; Y=Year; M=Month; D=Day.</b>	C	M



**Segment:** PAC, Package  
**Position:** 0690  
**Group:** Segment group 20: PAC-MEA-QTY-DTM-SG21  
**Usage:** Mandatory

**Description of codes and data in segment:**

Group	Ref.	Format	Description	M/C	Use
PAC010	7224	N ..8	NUMBER OF PACKAGES Number of individual parts of a shipment either unpacked, orpacked in such a way that they cannot be divided withoutfirst undoing the packing.	C	C
PAC020	C531		PACKAGING DETAILS Packaging level and details, terms and conditions.	C	C
	7075	AN ..3	Packaging level, coded Indication of level of packaging specified.	C	C
	7233	AN ..3	Packaging related information, coded Code giving packaging, handling and marking relatedinformation.	C	C
	7073	AN ..3	Packaging terms and conditions, coded Code identifying packaging terms and conditions.	C	C
PAC030	C202		PACKAGE TYPE Type of package by name or by code from a specifiedsource.	C	C
	7065	AN ..17	Type of packages identification Coded description of the form in which goods are presented. <b>Use: Code of type of packaging used.</b>	C	C
	1131	AN ..3	Code list qualifier Identification of a code list.	C	C
	3055	AN ..3	Code list responsible agency, coded Code identifying the agency responsible for a code list.	C	C
	7064	AN ..35	Type of packages Description of the form in which goods are presented.	C	C
PAC040	C402		PACKAGE TYPE IDENTIFICATION Identification of the form in which goods are described.	C	C
	7077	AN ..3	Item description type, coded Code indicating the format of a description.	M	M
	7064	AN ..35	Type of packages Description of the form in which goods are presented.	M	M
	7143	AN ..3	Item number type, coded Identification of the type of item number.	C	C
	7064	AN ..35	Type of packages Description of the form in which goods are presented.	C	C
	7143	AN ..3	Item number type, coded Identification of the type of item number.	C	C
PAC050	C532		RETURNABLE PACKAGE DETAILS Indication of responsibility for payment and load contentsof returnable packages.	C	C
	8395	AN ..3	Returnable package freight paymentresponsibility, coded To indicate responsibility for payment of return freightcharges for packaging that is returnable.	C	C
	8393	AN ..3	Returnable package load contents, coded To indicate the composition of goods loaded into a returnablepackage.	C	C



**Segment:** QTY, Quantity

**Position:** 0710

**Group:** Segment group 20: PAC-MEA-QTY-DTM-SG21

**Usage:** Mandatory

**Description of codes and data in segment:**

Group	Ref.	Format	Description	M/C	Use
QTY010	C186		QUANTITY DETAILS Quantity information in a transaction, qualified when relevant.	M	M
	6063	AN ..3	Quantity qualifier Code giving specific meaning to a quantity. <b>Use: "52" Quantity per pack</b>	M	M
	6060	N ..15	Quantity Numeric value of a quantity. <b>Use: Numeric value expressing quantity per pack.</b>	M	M
	6411	AN ..3	Measure unit qualifier Code giving specific meaning to a quantity. <b>Use: "PCE" Pieces "MTR" Meter "LTR" Liter "KGM" Kilogram</b>	C	C

**Segment:** PCI, Package identification  
**Position:** 0740  
**Group:** Segment group 21: PCI-GIN  
**Usage:** Conditional

**Description of codes and data in segment:**

Group	Ref.	Format	Description	M/C	Use
PCI010	4233	AN ..3	MARKING INSTRUCTIONS, CODED Code indicating instructions on how specified packages or physical units should be marked.	C	C
PCI020	C210		MARKS & LABELS Shipping marks on packages in free text; one to ten lines.	C	C
	7102	AN ..35	Shipping marks Marks and numbers identifying individual packages. <b>Use: Information to be printed on label location line 1 specified in 7511.</b>	M	M
	7102	AN ..35	Shipping marks Marks and numbers identifying individual packages. <b>Use: Information to be printed on label location line 2 specified in 7511.</b>	C	C
	7102	AN ..35	Shipping marks Marks and numbers identifying individual packages.	C	C
	7102	AN ..35	Shipping marks Marks and numbers identifying individual packages.	C	C
	7102	AN ..35	Shipping marks Marks and numbers identifying individual packages.	C	C
	7102	AN ..35	Shipping marks Marks and numbers identifying individual packages.	C	C
	7102	AN ..35	Shipping marks Marks and numbers identifying individual packages.	C	C
	7102	AN ..35	Shipping marks Marks and numbers identifying individual packages.	C	C
	7102	AN ..35	Shipping marks Marks and numbers identifying individual packages.	C	C
	7102	AN ..35	Shipping marks Marks and numbers identifying individual packages.	C	C
	7102	AN ..35	Shipping marks Marks and numbers identifying individual packages.	C	C
	7102	AN ..35	Shipping marks Marks and numbers identifying individual packages.	C	C
	7102	AN ..35	Shipping marks Marks and numbers identifying individual packages.	C	C
PCI030	8275	AN ..3	CONTAINER/PACKAGE STATUS, CODED	C	C
PCI040	C827		TYPE OF MARKING Specification of the type of marking that reflects the method that was used and the conventions adhered to for marking (e.g. of packages).	C	C
	7511	AN ..3	Type of marking, coded To specify the type of marking that reflects the method and the conventions adhered to for marking. <b>Use: Code assigned to specific location on shipping label. Refer to labelling guidelines.</b>	M	M
	1131	AN ..3	Code list qualifier Identification of a code list.	C	C
	3055	AN ..3	Code list responsible agency, coded Code identifying the agency responsible for a code list. <b>Use: "92" Assigned by buyer or buyer's agent</b>	C	C



**Segment:** UNT, Message trailer

**Position:** 1030

**Group:**

**Usage:** Mandatory

**Description of codes and data in segment:**

Group	Ref.	Format	Description	M/C	Use
UNT010	0074	N ..6	NUMBER OF SEGMENTS IN THE MESSAGE Control count including UNH and UNT. <b>Use: Count of segments from UNH to UNT</b>	M	M
UNT020	0062	AN ..14	MESSAGE REFERENCE NUMBER <b>Use: Shall be identical to 0062 in UNH</b>	M	M

**Segment:** UNZ, Interchange trailer

**Position:** 1040

**Group:**

**Usage:** Mandatory

**Description of codes and data in segment:**

Group	Ref.	Format	Description	M/C	Use
UNZ010	0036	N ..6	INTERCHANGE CONTROL COUNT The count of the number of messages or, if used, the number of functional groups in the interchange. One of these counts shall appear. <b>Use: "1"</b>	M	M
UNZ020	0020	AN ..14	INTERCHANGE CONTROL REFERENCE <b>Use: Shall be identical to 0020 in UNB segment</b>	M	M





## Sample Message

UNH+0001+DELFOR:D:97A:UN'  
BGM+241+2008266'  
DTM+137:20080922:102'  
DTM+158:20080922:102'  
DTM+159:20090421:102'  
NAD+MI+366172505::92'  
NAD+SF+TEST000005::92'  
NAD+SU+TEST000005::92'  
GIS+37'  
NAD+ST+366172505::92'  
LIN+++PART01:IN'  
RFF+ON:12345'  
QTY+48:7488:PCE'  
DTM+50:20080917:102'  
RFF+AAK:17608441926'  
QTY+70:43056:PCE'  
DTM+51:20080717:102'  
QTY+71:44304:PCE'  
DTM+51:20080717:102'  
SCC+1'  
QTY+113:7488:PCE'  
DTM+10:20080917:102'  
DTM+2:20080922:102'  
SCC+1'  
QTY+113:7488:PCE'  
DTM+10:20080924:102'  
DTM+2:20080929:102'  
SCC+1'  
QTY+113:8736:PCE'  
DTM+10:20081001:102'  
DTM+2:20081006:102'  
SCC+1'  
QTY+113:8112:PCE'  
DTM+10:20081008:102'  
DTM+2:20081013:102'  
SCC+2'  
QTY+113:8112:PCE'  
DTM+10:20081015:102'  
DTM+2:20081020:102'  
SCC+2'  
QTY+113:8112:PCE'  
DTM+10:20081022:102'  
DTM+2:20081027:102'  
SCC+2'  
QTY+113:8736:PCE'  
DTM+10:20081029:102'  
DTM+2:20081103:102'  
SCC+2'  
QTY+113:8112:PCE'  
DTM+10:20081105:102'



DTM+2:20081110:102'  
SCC+3'  
QTY+113:8112:PCE'  
DTM+10:20081112:102'  
DTM+2:20081117:102'  
SCC+3'  
QTY+113:9360:PCE'  
DTM+10:20081119:102'  
DTM+2:20081124:102'  
SCC+3'  
QTY+113:8112:PCE'  
DTM+10:20081126:102'  
DTM+2:20081201:102'  
SCC+3'  
QTY+113:9984:PCE'  
DTM+10:20081203:102'  
DTM+2:20081208:102'  
SCC+3'  
QTY+113:8112:PCE'  
DTM+10:20081210:102'  
DTM+2:20081215:102'  
SCC+3'  
QTY+113:0:PCE'  
DTM+10:20081217:102'  
DTM+2:20081222:102'  
SCC+3'  
QTY+113:0:PCE'  
DTM+10:20081224:102'  
DTM+2:20081229:102'  
SCC+3'  
QTY+113:8736:PCE'  
DTM+10:20081231:102'  
DTM+2:20090105:102'  
SCC+4'  
QTY+113:34944:PCE'  
DTM+10:20090107:102'  
DTM+2:20090112:102'  
SCC+4'  
QTY+113:33696:PCE'  
DTM+10:20090127:102'  
DTM+2:20090201:102'  
SCC+4'  
QTY+113:34320:PCE'  
DTM+10:20090216:102'  
DTM+2:20090221:102'  
SCC+4'  
QTY+113:26832:PCE'  
DTM+10:20090308:102'  
DTM+2:20090313:102'  
SCC+4'  
QTY+113:31200:PCE'  
DTM+10:20090328:102'



DTM+2:20090302:102'  
PAC+++CARTON'  
QTY+52:624:PCE'  
PCI++S00:IN1++B2::92'  
PCI++A11++B3::92'  
GIS+37'  
NAD+ST+366172505::92'  
LIN+++PART02:IN'  
RFF+ON:23456'  
QTY+48:7488:PCE'  
DTM+50:20080917:102'  
RFF+AAK:17608441926'  
QTY+70:54288:PCE'  
DTM+51:20080717:102'  
QTY+71:54288:PCE'  
DTM+51:20080717:102'  
SCC+1'  
QTY+113:7488:PCE'  
DTM+10:20080917:102'  
DTM+2:20080922:102'  
SCC+1'  
QTY+113:7488:PCE'  
DTM+10:20080924:102'  
DTM+2:20080929:102'  
SCC+1'  
QTY+113:8736:PCE'  
DTM+10:20081001:102'  
DTM+2:20081006:102'  
SCC+1'  
QTY+113:8112:PCE'  
DTM+10:20081008:102'  
DTM+2:20081013:102'  
SCC+2'  
QTY+113:8112:PCE'  
DTM+10:20081015:102'  
DTM+2:20081020:102'  
SCC+2'  
QTY+113:8112:PCE'  
DTM+10:20081022:102'  
DTM+2:20081027:102'  
SCC+2'  
QTY+113:8736:PCE'  
DTM+10:20081029:102'  
DTM+2:20081103:102'  
SCC+2'  
QTY+113:8112:PCE'  
DTM+10:20081105:102'  
DTM+2:20081110:102'  
SCC+3'  
QTY+113:8112:PCE'  
DTM+10:20081112:102'  
DTM+2:20081117:102'



SCC+3'  
QTY+113:9360:PCE'  
DTM+10:20081119:102'  
DTM+2:20081124:102'  
SCC+3'  
QTY+113:8112:PCE'  
DTM+10:20081126:102'  
DTM+2:20081201:102'  
SCC+3'  
QTY+113:9984:PCE'  
DTM+10:20081203:102'  
DTM+2:20081208:102'  
SCC+3'  
QTY+113:8112:PCE'  
DTM+10:20081210:102'  
DTM+2:20081215:102'  
SCC+3'  
QTY+113:0:PCE'  
DTM+10:20081217:102'  
DTM+2:20081222:102'  
SCC+3'  
QTY+113:0:PCE'  
DTM+10:20081224:102'  
DTM+2:20081229:102'  
SCC+3'  
QTY+113:8736:PCE'  
DTM+10:20081231:102'  
DTM+2:20090105:102'  
SCC+4'  
QTY+113:34320:PCE'  
DTM+10:20090107:102'  
DTM+2:20090112:102'  
SCC+4'  
QTY+113:34320:PCE'  
DTM+10:20090127:102'  
DTM+2:20090201:102'  
SCC+4'  
QTY+113:33696:PCE'  
DTM+10:20090216:102'  
DTM+2:20090221:102'  
SCC+4'  
QTY+113:27456:PCE'  
DTM+10:20090308:102'  
DTM+2:20090313:102'  
SCC+4'  
QTY+113:31200:PCE'  
DTM+10:20090328:102'  
DTM+2:20090302:102'  
PAC+++CARTON'  
QTY+52:624:PCE'  
PCI++S00:IN1++B2::92'  
PCI++A11++B3::92'



GIS+37'  
NAD+ST+366172505::92'  
LIN+++PART03:IN'  
RFF+ON:34567'  
QTY+48:5616:PCE'  
DTM+50:20080917:102'  
RFF+AAK:17608441926'  
QTY+70:38688:PCE'  
DTM+51:20080717:102'  
QTY+71:38688:PCE'  
DTM+51:20080717:102'  
SCC+1'  
QTY+113:5616:PCE'  
DTM+10:20080917:102'  
DTM+2:20080922:102'  
SCC+1'  
QTY+113:4992:PCE'  
DTM+10:20080924:102'  
DTM+2:20080929:102'  
SCC+1'  
QTY+113:6864:PCE'  
DTM+10:20081001:102'  
DTM+2:20081006:102'  
SCC+1'  
QTY+113:4992:PCE'  
DTM+10:20081008:102'  
DTM+2:20081013:102'  
SCC+2'  
QTY+113:6240:PCE'  
DTM+10:20081015:102'  
DTM+2:20081020:102'  
SCC+2'  
QTY+113:6240:PCE'  
DTM+10:20081022:102'  
DTM+2:20081027:102'  
SCC+2'  
QTY+113:5616:PCE'  
DTM+10:20081029:102'  
DTM+2:20081103:102'  
SCC+2'  
QTY+113:6240:PCE'  
DTM+10:20081105:102'  
DTM+2:20081110:102'  
SCC+3'  
QTY+113:5616:PCE'  
DTM+10:20081112:102'  
DTM+2:20081117:102'  
SCC+3'  
QTY+113:6240:PCE'  
DTM+10:20081119:102'  
DTM+2:20081124:102'  
SCC+3'



QTY+113:5616:PCE'  
DTM+10:20081126:102'  
DTM+2:20081201:102'  
SCC+3'  
QTY+113:6240:PCE'  
DTM+10:20081203:102'  
DTM+2:20081208:102'  
SCC+3'  
QTY+113:6240:PCE'  
DTM+10:20081210:102'  
DTM+2:20081215:102'  
SCC+3'  
QTY+113:0:PCE'  
DTM+10:20081217:102'  
DTM+2:20081222:102'  
SCC+3'  
QTY+113:0:PCE'  
DTM+10:20081224:102'  
DTM+2:20081229:102'  
SCC+3'  
QTY+113:5616:PCE'  
DTM+10:20081231:102'  
DTM+2:20090105:102'  
SCC+4'  
QTY+113:25584:PCE'  
DTM+10:20090107:102'  
DTM+2:20090112:102'  
SCC+4'  
QTY+113:25584:PCE'  
DTM+10:20090127:102'  
DTM+2:20090201:102'  
SCC+4'  
QTY+113:25584:PCE'  
DTM+10:20090216:102'  
DTM+2:20090221:102'  
SCC+4'  
QTY+113:18720:PCE'  
DTM+10:20090308:102'  
DTM+2:20090313:102'  
SCC+4'  
QTY+113:25584:PCE'  
DTM+10:20090328:102'  
DTM+2:20090302:102'  
PAC+++CARTON'  
QTY+52:624:PCE'  
PCI++S00:IN3++B2::92'  
PCI++A21++B3::92'  
GIS+37'  
NAD+ST+366172505::92'  
LIN+++PART04:IN'  
RFF+ON:45678'  
QTY+48:5616:PCE'



DTM+50:20080917:102'  
RFF+AAK:17608441926'  
QTY+70:16848:PCE'  
DTM+51:20080717:102'  
QTY+71:16848:PCE'  
DTM+51:20080717:102'  
SCC+1'  
QTY+113:5616:PCE'  
DTM+10:20080917:102'  
DTM+2:20080922:102'  
SCC+1'  
QTY+113:4992:PCE'  
DTM+10:20080924:102'  
DTM+2:20080929:102'  
SCC+1'  
QTY+113:6864:PCE'  
DTM+10:20081001:102'  
DTM+2:20081006:102'  
SCC+1'  
QTY+113:4992:PCE'  
DTM+10:20081008:102'  
DTM+2:20081013:102'  
SCC+2'  
QTY+113:6240:PCE'  
DTM+10:20081015:102'  
DTM+2:20081020:102'  
SCC+2'  
QTY+113:6240:PCE'  
DTM+10:20081022:102'  
DTM+2:20081027:102'  
SCC+2'  
QTY+113:5616:PCE'  
DTM+10:20081029:102'  
DTM+2:20081103:102'  
SCC+2'  
QTY+113:6240:PCE'  
DTM+10:20081105:102'  
DTM+2:20081110:102'  
SCC+3'  
QTY+113:6240:PCE'  
DTM+10:20081112:102'  
DTM+2:20081117:102'  
SCC+3'  
QTY+113:6240:PCE'  
DTM+10:20081119:102'  
DTM+2:20081124:102'  
SCC+3'  
QTY+113:5616:PCE'  
DTM+10:20081126:102'  
DTM+2:20081201:102'  
SCC+3'  
QTY+113:6240:PCE'



DTM+10:20081203:102'  
DTM+2:20081208:102'  
SCC+3'  
QTY+113:6240:PCE'  
DTM+10:20081210:102'  
DTM+2:20081215:102'  
SCC+3'  
QTY+113:0:PCE'  
DTM+10:20081217:102'  
DTM+2:20081222:102'  
SCC+3'  
QTY+113:0:PCE'  
DTM+10:20081224:102'  
DTM+2:20081229:102'  
SCC+3'  
QTY+113:5616:PCE'  
DTM+10:20081231:102'  
DTM+2:20090105:102'  
SCC+4'  
QTY+113:26208:PCE'  
DTM+10:20090107:102'  
DTM+2:20090112:102'  
SCC+4'  
QTY+113:26832:PCE'  
DTM+10:20090127:102'  
DTM+2:20090201:102'  
SCC+4'  
QTY+113:26208:PCE'  
DTM+10:20090216:102'  
DTM+2:20090221:102'  
SCC+4'  
QTY+113:19968:PCE'  
DTM+10:20090308:102'  
DTM+2:20090313:102'  
SCC+4'  
QTY+113:26208:PCE'  
DTM+10:20090328:102'  
DTM+2:20090302:102'  
PAC+++CARTON'  
QTY+52:624:PCE'  
PCI++S00:IN1++B2::92'  
PCI++A31++B3::92'  
GIS+37'  
NAD+ST+366172505::92'  
LIN+++PART05:IN'  
RFF+ON:56789'  
QTY+48:624:PCE'  
DTM+50:20080917:102'  
RFF+AAK:17608441926'  
QTY+70:1872:PCE'  
DTM+51:20080717:102'  
QTY+71:1872:PCE'





DTM+51:20080717:102'  
SCC+1'  
QTY+113:0:PCE'  
DTM+10:20080917:102'  
DTM+2:20080922:102'  
SCC+1'  
QTY+113:0:PCE'  
DTM+10:20080924:102'  
DTM+2:20080929:102'  
SCC+1'  
QTY+113:0:PCE'  
DTM+10:20081001:102'  
DTM+2:20081006:102'  
SCC+1'  
QTY+113:624:PCE'  
DTM+10:20081008:102'  
DTM+2:20081013:102'  
SCC+2'  
QTY+113:0:PCE'  
DTM+10:20081015:102'  
DTM+2:20081020:102'  
SCC+2'  
QTY+113:0:PCE'  
DTM+10:20081022:102'  
DTM+2:20081027:102'  
SCC+2'  
QTY+113:0:PCE'  
DTM+10:20081029:102'  
DTM+2:20081103:102'  
SCC+2'  
QTY+113:0:PCE'  
DTM+10:20081105:102'  
DTM+2:20081110:102'  
SCC+3'  
QTY+113:624:PCE'  
DTM+10:20081112:102'  
DTM+2:20081117:102'  
SCC+3'  
QTY+113:0:PCE'  
DTM+10:20081119:102'  
DTM+2:20081124:102'  
SCC+3'  
QTY+113:0:PCE'  
DTM+10:20081126:102'  
DTM+2:20081201:102'  
SCC+3'  
QTY+113:0:PCE'  
DTM+10:20081203:102'  
DTM+2:20081208:102'  
SCC+3'  
QTY+113:624:PCE'  
DTM+10:20081210:102'



DTM+2:20081215:102'  
SCC+3'  
QTY+113:0:PCE'  
DTM+10:20081217:102'  
DTM+2:20081222:102'  
SCC+3'  
QTY+113:0:PCE'  
DTM+10:20081224:102'  
DTM+2:20081229:102'  
SCC+3'  
QTY+113:0:PCE'  
DTM+10:20081231:102'  
DTM+2:20090105:102'  
SCC+4'  
QTY+113:624:PCE'  
DTM+10:20090107:102'  
DTM+2:20090112:102'  
SCC+4'  
QTY+113:624:PCE'  
DTM+10:20090127:102'  
DTM+2:20090201:102'  
SCC+4'  
QTY+113:624:PCE'  
DTM+10:20090216:102'  
DTM+2:20090221:102'  
SCC+4'  
QTY+113:1248:PCE'  
DTM+10:20090308:102'  
DTM+2:20090313:102'  
SCC+4'  
QTY+113:624:PCE'  
DTM+10:20090328:102'  
DTM+2:20090302:102'  
PAC+++CARTON'  
QTY+52:624:PCE'  
PCI++S00:IN2++B2::92'  
PCI++A31++B3::92'  
UNT+504+0001'