



**EDI**  
**Implementation Guidelines**  
**DESADV 97A**

**Contents**

DESADV Message Structure.....	2
Branching Diagram .....	9
Segment Description .....	10
Sample Message .....	28

DRAFT INTERNAL DOCUMENT



## DESADV Message Structure

Pos.	Segment Description	M/C <sup>1</sup>	R <sup>2</sup>	Use <sup>3</sup>
0000	<b>UNB, Interchange header</b> To start, identify and specify an interchange.	M	1	M
0010	<b>UNH, Message header</b> The message type code for the Despatch advice message is DESADV.  Note: Despatch advice messages conforming to this document must contain the following data in segment UNH, composite S009:  Data element    0065    DESADV 0052    D 0054    97A 0051    UN	M	1	M
0020	<b>BGM, Beginning of message</b> A segment for unique identification of the Despatch Advice document, by means of its name and its number.	M	1	M
0030	<b>DTM, Date/time/period</b> Date/time/period related to the whole message. The DTM segment must be specified at least once to identify the Despatch Advice date.	C	10	M
0040	<b>ALI, Additional information</b> A segment indicating that the message is subject to special conditions due to origin, customs preference or commercial factors.	C	5	C
0050	<b>MEA, Measurements</b> A segment specifying the weight and volume of the consignment.	C	5	C
0060	<b>MOA, Monetary amount</b> A segment to transmit monetary amounts for the whole despatch required by the consignee to prepare customs clearance procedures.	C	5	C
0070	<b>Segment group 1: RFF-DTM</b> A group of segments giving references where necessary, their dates relating to the whole message, e.g. contract number.	C	10	M
0080	<b>RFF, Reference</b> A segment for referencing documents relating to the whole despatch advice message, e.g. purchase orders, delivery instructions, import/export license.	M	1	M
0090	<b>DTM, Date/time/period</b> Date/time/period from the referred document.	C	1	C
0100	<b>Segment group 2: NAD-LOC-SG3-SG4</b> A group of segments identifying names, addresses, locations, and required supporting documents relevant to the whole Despatch Advice.	C	10	M

<sup>1</sup> UN/EDIFACT: [M]andatory/[C]onditional

<sup>2</sup> [R]epeat count

<sup>3</sup> Use at Methode: [M]andatory/[C]onditional



Pos.	Segment Description	M/C <sup>1</sup>	R <sup>2</sup>	Use <sup>3</sup>
0110	<b>NAD, Name and address</b> A segment for identifying names, addresses, and their functions relevant to the whole Despatch Advice. Identification of the parties involved is recommended for the Despatch Advice message, and is to be given in the NAD segment.  It is recommended that where possible, only the coded form of the party ID should be specified, e.g. the buyer and seller are known to each other, thus only the coded ID is required. The consignee or delivery address may vary and would have to be clearly specified, preferably in structured format.	M	1	M
0120	<b>LOC, Place/location identification</b> A segment indicating more details regarding specific places/locations related to the party specified in the NAD segment, e.g. internal site/building number.	C	10	C
0130	<b>Segment group 3: RFF-DTM</b> A group of segments giving references relevant only to the specified party rather than the whole message.	C	10	C
0140	<b>RFF, Reference</b> A segment for referencing documents relating to the party specified by the NAD segment.	M	1	M
0150	<b>DTM, Date/time/period</b> A segment for specifying Date/time/period of the referred document.	C	1	C
0160	<b>Segment group 4: CTA-COM</b> A group of segments to identify the people, functions, departments and appropriate numbers to whom communication should be directed.	C	10	C
0170	<b>CTA, Contact information</b> A segment to identify the person, function or department to whom communication should be directed.	M	1	M
0180	<b>COM, Communication contact</b> A segment to identify communication types and numbers for the person, function or department identified in the CTA.	C	5	C
0190	<b>Segment group 5: TOD-LOC-FTX</b> A group of segments indicating terms of delivery.	C	10	C
0200	<b>TOD, Terms of delivery or transport</b> A segment indicating the terms of delivery and transfer for the whole despatch advice.	M	1	M
0210	<b>LOC, Place/location identification</b> A segment indicating locations relevant to the TOD segment.	C	5	C
0220	<b>FTX, Free text</b> Additional free text pertinent to terms of delivery. In computer to computer exchanges such text will normally require the receiver to process this segment manually.	C	5	C
0230	<b>Segment group 6: TDT-PCD-SG7</b> A group of segments specifying details of the mode and means of transport and date/time of departure and destination relevant to the whole despatch advice.	C	10	M
0240	<b>TDT, Details of transport</b> A segment specifying the carriage, and the mode and means of transport of the goods being despatched.	M	1	M
0250	<b>PCD, Percentage details</b> A segment specifying the percentage of utilization of the capacity of the means of transport.	C	6	C



Pos.	Segment Description	M/C <sup>1</sup>	R <sup>2</sup>	Use <sup>3</sup>
0260	<b>Segment group 7: LOC-DTM</b> A group of segments giving the location and date/time information relative to the transportation.	C	10	C
0270	<b>LOC, Place/location identification</b> A segment indicating locations relevant to the transport specified in the TDT segment.	M	1	M
0280	<b>DTM, Date/time/period</b> A segment giving the date/time/period information of departure and/or arrival of the transported goods for the specified location.	C	10	C
0290	<b>Segment group 8: EQD-MEA-SEL-EQA-SG9</b> A group of segments providing information relative to the equipment used for the transportation of goods relevant to the whole despatch advice.	C	10	C
0300	<b>EQD, Equipment details</b> A segment to define fixed information regarding equipment used in conjunction with the whole despatch advice, and if required, to indicate responsibility for supply of the equipment.	M	1	C
0310	<b>MEA, Measurements</b> A segment specifying physical measurements of equipment described in the EQD segment.	C	5	C
0320	<b>SEL, Seal number</b> A segment specifying a seal number connected to a specific equipment named in the EQD.	C	25	C
0330	<b>EQA, Attached equipment</b> A segment identifying equipment either attached to the equipment described in the EQD segment above, or equipment related to that described in the EQD segment, and which is further defined in a subsequent EQD segment.	C	5	C
0340	<b>Segment group 9: HAN-FTX</b> A group of segments providing information on hazardous goods and their handling.	C	10	C
0350	<b>HAN, Handling instructions</b> A segment providing information on handling and notification of hazardous materials in the specified equipment.	M	1	C
0360	<b>FTX, Free text</b> A segment with free text information in coded or clear form to give further clarification, when required, for hazardous material.	C	10	C
0370	<b>Segment group 10: CPS-FTX-SG11-SG15</b> A group of segments providing details of all package levels and of the individual despatched items contained in the consignment. This segment group provides the capability to give the hierarchical packing relationships. The group defines a logical top-down order structure. The lowest level package information of the hierarchy is followed by the detail product information.	C	9999	M
0380	<b>CPS, Consignment packing sequence</b> A segment identifying the sequence in which packing of the consignment occurs, e.g. boxes loaded onto a pallet.	M	1	M
0390	<b>FTX, Free text</b> A segment with free text information in coded or clear form to give further clarification, when required, as to the packing sequence.  In computer to computer exchanges such text will normally require the receiver to process this segment manually.	C	5	C



Pos.	Segment Description	M/C <sup>1</sup>	R <sup>2</sup>	Use <sup>3</sup>
0400	<b>Segment group 11: PAC-MEA-QTY-SG12-SG13</b> A group of segments identifying packaging, physical dimensions, marks and numbers, quantities, date and time information, handling information and information about packing at this level.	C	9999	M
0410	<b>PAC, Package</b> A segment specifying the number and type of the packages/physical units and the physical type of packaging for the despatched goods.	M	1	M
0420	<b>MEA, Measurements</b> A segment specifying physical measurements of the packages/physical units described in the PAC segment.	C	10	C
0430	<b>QTY, Quantity</b> A segment to specify the quantity per package described in the PAC segment.	C	10	M
0440	<b>Segment group 12: HAN-FTX</b> A group of segments providing information on hazardous goods and handling.	C	10	C
0450	<b>HAN, Handling instructions</b> A segment providing information on required handling and notification of hazardous materials in the specified package.	M	1	C
0460	<b>FTX, Free text</b> A segment with free text information in coded or clear form to give further clarification, when required, for hazardous materials.	C	10	C
0470	<b>Segment group 13: PCI-RFF-DTM-GIR-SG14</b> A group of segments specifying markings, labels, and packing numbers.	C	1000	M
0480	<b>PCI, Package identification</b> A segment specifying markings and/or labels used on individual physical units (packages) described in the PAC segment.	M	1	M
0490	<b>RFF, Reference</b> A segment for referencing the package identification, e.g. master label number.	C	1	C
0500	<b>DTM, Date/time/period</b> A segment for specifying date/time/period related to the document referenced.	C	5	C
0510	<b>GIR, Related identification numbers</b> A segment providing set of package identification related numbers, e.g. a package label number and a KANBAN card number assigned to the same package.	C	99	M
0520	<b>Segment group 14: GIN-DLM</b> A group of segments giving package identification numbers and, where relevant, delivery limitation information.	C	99	C
0530	<b>GIN, Goods identity number</b> A segment providing the identity numbers of packages being despatched.	M	1	M
0540	<b>DLM, Delivery limitations</b> A segment to identify any limitation on delivery of goods, e.g. hold until final approval by supplier.	C	10	C
0550	<b>Segment group 15: LIN-PIA-IMD-MEA-QTY-ALI-GIN-GIR-DLM-DTM-NAD-TDT-HAN-FTX-MOA-SG16-SG17-SG18-SG19-SG20-SG23</b> A group of segments providing details of the individual despatched items.	C	9999	M



Pos.	Segment Description	M/C <sup>1</sup>	R <sup>2</sup>	Use <sup>3</sup>
0560	<b>LIN, Line item</b> A segment identifying the product being despatched.  All other segments in the detail section following the LIN segment refer to that line item.	M	1	M
0570	<b>PIA, Additional product id</b> A segment providing additional product identification.	C	10	C
0580	<b>IMD, Item description</b> A segment for describing the product being despatched. This segment should be used for products that cannot be identified by a product code or article number.	C	25	C
0590	<b>MEA, Measurements</b> A segment specifying physical measurements of the despatched item in original or unpacked form.	C	10	C
0600	<b>QTY, Quantity</b> A segment to give quantity information concerning the product.	C	10	M
0610	<b>ALI, Additional information</b> A segment indicating that the line item is subject to special conditions due to origin, customs preference, or commercial factors.	C	10	C
0620	<b>GIN, Goods identity number</b> A segment providing identity numbers of the goods being despatched, e.g. serial numbers for assembled equipment.	C	100	C
0630	<b>GIR, Related identification numbers</b> A segment providing sets of related identification numbers for a line item, e.g. engine number, chassis number and transmission number for a vehicle.	C	100	C
0640	<b>DLM, Delivery limitations</b> A segment to identify any limitation on delivery of goods, e.g. hold until final approval by supplier.	C	100	C
0650	<b>DTM, Date/time/period</b> A segment providing date, time information related to the line item, e.g. production date.	C	5	C
0660	<b>NAD, Name and address</b> A segment for identifying names and addresses and their functions relevant to the item, e.g. manufacturer.	C	5	C
0670	<b>TDT, Details of transport</b> A segment specifying the carriage, and the mode and means of transport of the goods being despatched, e.g. shipment/consignment number, shipping method, carrier.	C	1	C
0680	<b>HAN, Handling instructions</b> A segment providing information on the handling and notification of hazardous materials.	C	20	C
0690	<b>FTX, Free text</b> A segment with free text information in coded or clear form to give further clarification, when required, to the line item. In computer to computer exchanges such text will normally require the receiver to process this segment manually.	C	99	C
0700	<b>MOA, Monetary amount</b> A segment giving monetary amounts required by the consignee to undertake customs clearance procedures.	C	5	C



Pos.	Segment Description	M/C <sup>1</sup>	R <sup>2</sup>	Use <sup>3</sup>
0710	<b>Segment group 16: RFF-NAD-CTA-DTM</b> A group of segments to give reference numbers and dates.	C	99	M
0720	<b>RFF, Reference</b> A segment identifying documents related to the line item.	M	1	M
0730	<b>NAD, Name and address</b> A segment for identifying names and addresses and their functions relevant to the originator of the document in the RFF segment.	C	1	C
0740	<b>CTA, Contact information</b> A segment to identify the office, branch or department to whom communication relevant to the document should be directed.	C	1	C
0750	<b>DTM, Date/time/period</b> A segment for date/time/period relative to the referred document.	C	1	C
0760	<b>Segment group 17: DGS-QTY-FTX</b> A group of segments giving information about dangerous goods.	C	10	C
0770	<b>DGS, Dangerous goods</b> A segment to indicate the class of dangerous goods.	M	1	M
0780	<b>QTY, Quantity</b> A segment to specify quantity of the given dangerous goods.	C	1	C
0790	<b>FTX, Free text</b> A segment to describe dangerous goods.	C	5	C
0800	<b>Segment group 18: LOC-NAD-DTM-QTY</b> A group of segments giving location information and where relevant, additional addresses, date and time, and quantities.	C	100	C
0810	<b>LOC, Place/location identification</b> A segment identifying a specific location to which products will be delivered.	M	1	M
0820	<b>NAD, Name and address</b> A segment for identifying names and addresses and their functions relevant to the delivery point.  It is recommended that where possible only the coded form of the party ID should be specified, e.g. the buyer and seller are known to each other, thus only the coded ID is required. The consignee or delivery address may vary and would have to be clearly specified, preferably in structured1 format.	C	1	C
0830	<b>DTM, Date/time/period</b> A segment providing date/time information relevant for delivery to the specific location.	C	1	C
0840	<b>QTY, Quantity</b> A segment to specify quantity for the given location.	C	10	C
0850	<b>Segment group 19: SGP-QTY</b> A group of segments indicating the split placement of packages or unpacked goods into equipment.	C	1000	C
0860	<b>SGP, Split goods placement</b> A segment to specify the placement of goods in relation to one equipment. If goods are unpacked, their quantity would be given in the following QTY segment.	M	1	M
0870	<b>QTY, Quantity</b> A segment to specify the quantity of unpacked goods being placed in a specific equipment.	C	10	C



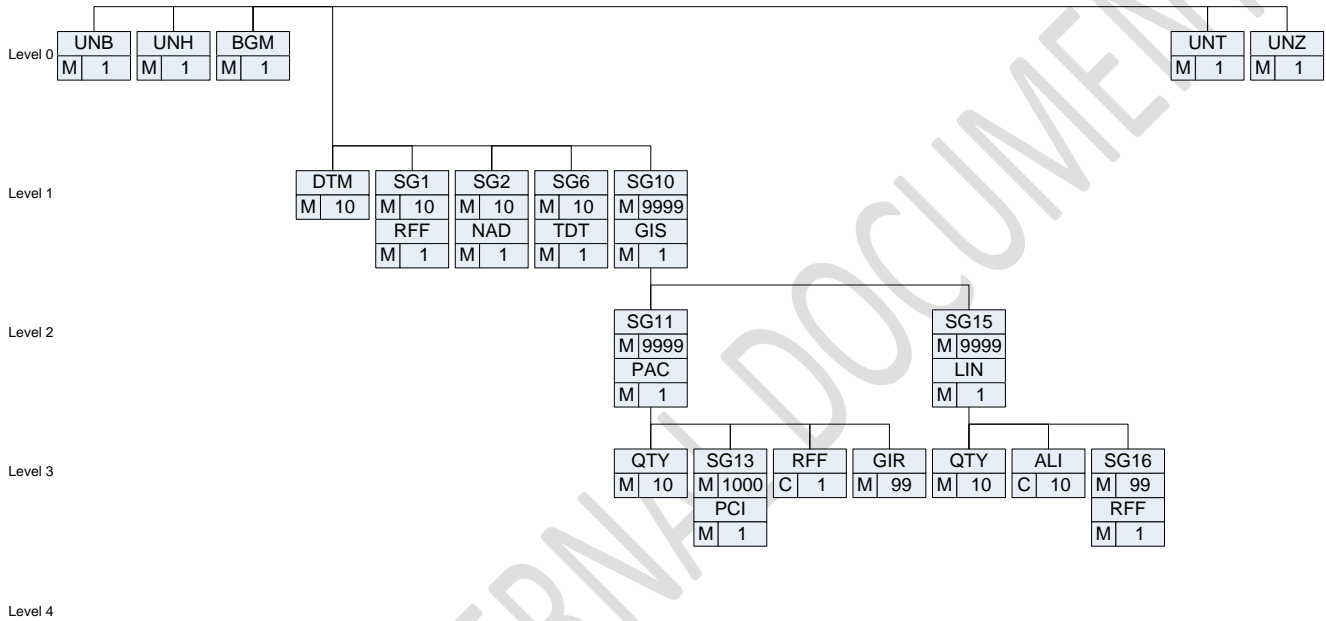
Pos.	Segment Description	M/C <sup>1</sup>	R <sup>2</sup>	Use <sup>3</sup>
0880	<b>Segment group 20: PCI-DTM-MEA-QTY-SG21-SG22</b> A group of segments identifying one specific package or a number of packages, their marks and numbers, measurements, quantities, date and time information and handling instructions.	C	9999	C
0890	<b>PCI, Package identification</b> A segment specifying marking and labels used on individual packages or a range of packages.	M	1	M
0900	<b>DTM, Date/time/period</b> A segment giving the date/time details related to the goods within the packages, e.g. expiration date.	C	5	C
0910	<b>MEA, Measurements</b> A segment specifying physical measurements of packages.	C	10	C
0920	<b>QTY, Quantity</b> A segment to specify quantity per package.	C	1	C
0930	<b>Segment group 21: GIN-DLM</b> A group of segments giving package identification numbers and, where relevant, delivery limitation information.	C	10	C
0940	<b>GIN, Goods identity number</b> A segment providing identification numbers being applied to the packages despatched.	M	1	M
0950	<b>DLM, Delivery limitations</b> A segment to identify any limitation on delivery of goods, e.g. hold until final approval by supplier.	C	100	C
0960	<b>Segment group 22: HAN-FTX-GIN</b> A group of segment providing information on hazardous materials and handling.	C	10	C
0970	<b>HAN, Handling instructions</b> A segment providing information on handling and notification of hazardous materials.	M	1	M
0980	<b>FTX, Free text</b> A segment with free text information in coded or clear form to give further clarification, when required, for hazardous materials.	C	5	C
0990	<b>GIN, Goods identity number</b> A segment providing identification numbers being applied to the packages containing hazardous goods.	C	1000	C
1000	<b>Segment group 23: QVR-DTM</b> A group of segments identifying quantity variances, the reason for the variance, and, when relevant, date and time information.	C	10	C
1010	<b>QVR, Quantity variances</b> A segment identifying a quantity variance and the reason for the variance.	M	1	M
1020	<b>DTM, Date/time/period</b> A segment to give date and time information relative to the quantity variances, e.g. proposed delivery date on the back order.	C	5	C
1030	<b>CNT, Control total</b> A segment by which control totals may be provided by sender for checking by the receiver.	C	5	C
1040	<b>UNT, Message trailer</b> A service segment ending a message, giving the total number of segments in the message and the control reference number of the message.	M	1	M





Pos.	Segment Description	M/C <sup>1</sup>	R <sup>2</sup>	Use <sup>3</sup>
1050	<b>UNZ, Interchange trailer</b> To end and check the completeness of an interchange.	M	1	M

### Branching Diagram



## Segment Description

**Segment:** UNB, Interchange header

**Position:** 0000

**Group:**

**Usage:** Mandatory

**Description of codes and data in segment:**

Group	Ref.	Format	Description	M/C	Use
UNB010	S001	A 4	SYNTAX IDENTIFIER	M	M
	0001		Syntax identifier A 3 upper case Controlling Agency and A 1 level. <b>Use: "UNOA"</b>	M	M
	0002	N 1	Syntax version number <b>Use: "2"</b>	M	M
UNB020	S002	AN ..35	INTERCHANGE SENDER	M	M
	0004		Sender identification Code or name as specified in interchange agreement. <b>Use: Refer to agreed EDI parameters</b>	M	M
	0007	AN ..4	Partner identification code qualifier Used with sender identification code. <b>Use: Refer to agreed EDI parameters</b>	C	C
	0008	AN ..14	Address for reverse routing	C	-
UNB030	S003	AN ..35	INTERCHANGE RECIPIENT	M	M
	0010		Recipient Identification Code or name as specified in interchange agreement. <b>Use: Refer to agreed EDI parameters</b>	M	M
	0007	AN ..4	Partner identification code qualifier Used with recipient identification code. <b>Use: Refer to agreed EDI parameters</b>	C	C
	0014	AN ..14	Routing address	C	-
UNB040	S004	N 6	DATE/TIME OF PREPARATION	M	M
	0017		Date Local date when interchange was created. <b>Use: Date in CCMDD format</b>	M	M
	0019	N 4	Time Local time when interchange was created. <b>Use: Time in HHMM format</b>	M	M
UNB050	0020	AN ..14	INTERCHANGE CONTROL REFERENCE Unique reference assigned by sender. Usually assigned by converter program. <b>Use: Unique transmissions reference number</b>	M	M
UNB060	S005	AN ..14	RECIPIENTS REFERENCE, PASSWORD	C	-
	0022		Recipient's reference/password	M	-
	0025	AN 2	Recipient's reference/password qualifier	C	-
UNB070	0026	AN ..14	APPLICATION REFERENCE	C	-
UNB080	0029	A 1	PROCESSING PRIORITY CODE	C	-
UNB090	0031	N 1	ACKNOWLEDGEMENT REQUEST	C	-
UNB100	0032	AN ..35	COMMUNICATIONS AGREEMENT ID	C	-
UNB110	0035	N 1	TEST INDICATOR <b>Use: "1" if the interchange is a test. Otherwise not used.</b>	C	C



Segment: UNH, Message header

Position: 0010

Group:

Usage: Mandatory

Description of codes and data in segment:

Group	Ref.	Format	Description	M/C	Use
UNH010	0062	AN ..14	MESSAGE REFERENCE NUMBER A sender's unique message reference. <b>Use: Unique message reference number</b>	M	M
UNH020	S009		MESSAGE IDENTIFIER	M	M
	0065	AN ..6	Message type Type of message being transmitted. <b>Use: "DESADV"</b>	M	M
	0052	AN ..3	Message version number Version number of the message type. <b>Use: "D"</b>	M	M
	0054	AN ..3	Message release number Release number within current version number. <b>Use: "97A"</b>	M	M
	0051	AN ..2	Controlling agency Code to identify the agency controlling the specification, maintenance and publication of the message type. <b>Use: "UN"</b>	M	M
	0057	AN ..6	Association assigned code A code assigned by the association responsible for the design and maintenance of the message type.	C	C
UNH030	0068	AN ..35	COMMON ACCESS REFERENCE	C	-
UNH040	S010		STATUS OF THE TRANSFER	C	-
	0070	N ..2	Sequence of transfers	M	-
	0073	A 1	First and last transfer	C	-

**Segment:** BGM, Beginning of message

**Position:** 0020

**Group:**

**Usage:** Mandatory

**Description of codes and data in segment:**

Group	Ref.	Format	Description	M/C	Use
BGM010	C002		DOCUMENT/MESSAGE NAME Identification of a type of document/message by code or name. Code preferred.	C	M
	1001	AN ..3	Document/message name, coded Document/message identifier expressed in code. <b>Use: "351" Despatch advice. Document/message by means of which the seller or consignor informs the consignee about the despatch of goods.</b>	C	M
	1131	AN ..3	Code list qualifier Identification of a code list.	C	C
	3055	AN ..3	Code list responsible agency, coded Code identifying the agency responsible for a code list.	C	C
	1000	AN ..35	Document/message name Plain language identifier specifying the function of a document/message.	C	C
BGM020	C106		DOCUMENT/MESSAGE IDENTIFICATION Identification of a document/message by its number and eventually its version or revision.	C	M
	1004	AN 35	Document/message number Reference number assigned to the document/message by the issuer. <b>Use: Delivery note/advice note number assigned by supplier. A unique control number, commonly called a Shipment Identification Number or (SID) assigned by the original shipper to identify a specific shipment. The SID cannot be repeated within a one year period. This number must be referenced on both the packing slip and the Bill of lading as the Shipment Identification Number (SID).</b>	C	M
	1056	AN ..9	Version To specify the version number or name of an object.	C	C
	1060	AN 6	Revision number To specify a revision number.	C	C
BGM030	1225	AN ..3	MESSAGE FUNCTION, CODED Code indicating the function of the message.	C	C
BGM040	4343	AN ..3	RESPONSE TYPE, CODED Code specifying the type of acknowledgment required or transmitted.	C	C



Segment: DTM, Date/time/period

Position: 0030

Group:

Usage: Mandatory

Description of codes and data in segment:

Group	Ref.	Format	Description	M/C	Use
DTM010	C507		DATE/TIME/PERIOD Date and/or time, or period relevant to the specified date/time/period type.	M	M
	2005	AN ..3	Date/time/period qualifier Code giving specific meaning to a date, time or period. <b>Use: "11" Despatch date and or time. Date/time on which the goods are or are expected to be despatched or shipped.</b> <b>"17" Delivery date/time, estimated. Date and/or time when the shipper of the goods expects delivery will take place.</b> <b>"137" Document/message date/time. Date/time when a document/message is issued.</b>	M	M
	2380	AN ..35	Date/time/period The value of a date, a date and time, a time or of a period in a specified representation. <b>Use: Date in CCYMMDDHHMM format</b>	C	M
	2379	AN ..3	Date/time/period format qualifier Specification of the representation of a date, a date and time or of a period. <b>Use: "203" CCYMMDDHHMM Calendar date and time. C=Century; Y=Year; M=Month; D=Day; H=Hour; M=Minute.</b>	C	M

**Segment:** RFF, Reference  
**Position:** 0080  
**Group:** Segment group 1: RFF-DTM  
**Usage:** Mandatory

**Description of codes and data in segment:**

Group	Ref.	Format	Description	M/C	Use
RFF010	C506		REFERENCE	M	M
	1153	AN ..3	Identification of a reference. Reference qualifier Code giving specific meaning to a reference segment or a reference number. <b>Use: "BM" Bill of lading number. Reference number assigned to a bill of lading. Packing slip or master bill of lading number.</b> <b>"AWB" Air waybill number. Reference number assigned to an air waybill. Required for airfreight.</b>	M	M
	1154	AN ..35	Reference number Identification number the nature and function of which can be qualified by an entry in data element 1153 Reference qualifier. <b>Use: Identification number as identified by code in 1153.</b>	C	M
	1156	AN ..6	Line number Number of the line in the document/message referenced in 1154 Reference number.	C	C
	4000	AN ..35	Reference version number To uniquely identify a reference by its revision number.	C	C

**Segment:** NAD, Name and address  
**Position:** 0110  
**Group:** Segment group 2: NAD-LOC-SG3-SG4  
**Usage:** Mandatory

**Description of codes and data in segment:**

Group	Ref.	Format	Description	M/C	Use
NAD010	3035	AN ..3	PARTY QUALIFIER Code giving specific meaning to a party. <b>Use: "MI" Planning schedule/material release issuer.</b> <b>Code for Methode will be provided in 3039.</b> <b>"ST" Ship to. Identification of the party to where goods will be or have been shipped. Methode's ship to location code will be provided in 3039.</b> <b>"SF" Ship from. Identification of the party from where goods will be or have been shipped. Code assigned by Methode for supplier's ship from location will be provided in 3039.</b> <b>"SU" Supplier. Party which manufactures or otherwise has possession of goods, and consigns or makes them available in trade. Code assigned by Methode for supplier will be provided in 3039.</b>	M	M
NAD020	C082		PARTY IDENTIFICATION DETAILS	C	M
	3039	AN ..35	Identification of a transaction party by code. Party id. Identification Code identifying a party involved in a transaction. <b>Use: Methode's material issuer code, ship to code, ship from code or supplier code depending on code specified in 3035</b>	M	M
	1131	AN ..3	Code list qualifier Identification of a code list.	C	C
	3055	AN ..3	Code list responsible agency, coded Code identifying the agency responsible for a code list. <b>Use: "92" Assigned by buyer or buyer's agent</b>	C	C
NAD030	C058		NAME AND ADDRESS Unstructured name and address: one to five lines.	C	C
	3124	AN ..35	Name and address line Free form name and address description.	M	M
	3124	AN ..35	Name and address line Free form name and address description.	C	C
	3124	AN ..35	Name and address line Free form name and address description.	C	C
	3124	AN ..35	Name and address line Free form name and address description.	C	C
	3124	AN ..35	Name and address line Free form name and address description.	C	C



NAD040	C080		<b>PARTY NAME</b> Identification of a transaction party by name, one to five lines. Party name may be formatted.	C	C
	3036	AN ..35	Party name Name of a party involved in a transaction.	M	M
	3036	AN ..35	Party name Name of a party involved in a transaction.	C	C
	3036	AN ..35	Party name Name of a party involved in a transaction.	C	C
	3036	AN ..35	Party name Name of a party involved in a transaction.	C	C
	3036	AN ..35	Party name Name of a party involved in a transaction.	C	C
	3045	AN ..3	Party name format, coded Specification of the representation of a party name.	C	C
NAD050	C059		<b>STREET</b> Street address and/or PO Box number in a structured address: one to three lines.	C	C
	3042	AN ..35	Street and number/p.o. box Street and number in plain language, or Post Office Box No.	M	MC
	3042	AN ..35	Street and number/p.o. box Street and number in plain language, or Post Office Box No.	C	C
	3042	AN ..35	Street and number/p.o. box Street and number in plain language, or Post Office Box No.	C	C
	3042	AN ..35	Street and number/p.o. box Street and number in plain language, or Post Office Box No.	C	C
NAD060	3164	AN ..35	<b>CITY NAME</b> Name of a city (a town, a village) for addressing purposes.	C	C
NAD070	3229	AN ..9	<b>COUNTRY SUB-ENTITY IDENTIFICATION</b> Identification of the name of sub-entities (state, province) defined by appropriate governmental agencies.	C	C
NAD080	3251	AN ..9	<b>POSTCODE IDENTIFICATION</b> Code defining postal zones or addresses.	C	C
NAD090	3207	AN ..3	<b>COUNTRY, CODED</b> Identification of the name of a country or other geographical entity as specified in ISO 3166.	C	C



**Segment:** TDT, Details of transport  
**Position:** 0240  
**Group:** Segment group 6: TDT-PCD-SG7  
**Usage:** Mandatory

**Description of codes and data in segment:**

Group	Ref.	Format	Description	M/C	Use
TDT010	8051	AN ..3	TRANSPORT STAGE QUALIFIER Qualifier giving a specific meaning to the transport details. <b>Use: "12" At departure. Transport by which goods are moved from the place of departure.</b>	M	M
TDT020	8028	AN ..17	CONVEYANCE REFERENCE NUMBER Unique reference given by the carrier to a certain journey or departure of a means of transport (generic term). <b>Use: Reference assigned by carrier to shipment.</b>	C	C
TDT030	C220		MODE OF TRANSPORT Method of transport code or name. Code preferred.	C	M
	8067	AN ..3	Mode of transport, coded Coded method of transport used for the carriage of the goods. <b>Use: "A" Airfreight "M" Motor/land</b>	C	M
	8066	AN ..17	Mode of transport Method of transport used for the carriage of the goods.	C	C
TDT040	C228		TRANSPORT MEANS Code and/or name identifying the type of means of transport.	C	C
	8179	AN ..8	Type of means of transport identification	C	C
	8178	AN ..17	Code defining the type of the means of transport being utilized. Type of means of transport Description of the type of the means of transport being utilized.	C	C
TDT050	C040		CARRIER Identification of a carrier by code and/or by name. Code preferred.	C	C
	3127	AN ..17	Carrier identification Identification of party undertaking or arranging transport of goods between named points. <b>Use: Code assigned to carrier.</b>	C	C
	1131	AN ..3	Code list qualifier Identification of a code list.	C	C
	3055	AN ..3	Code list responsible agency, coded Code identifying the agency responsible for a code list. <b>Use: "92" Assigned by buyer or buyer's agent</b>	C	C
	3128	AN ..35	Carrier name Name of party undertaking or arranging transport of goods between named points. <b>Use: Carrier's descriptive name</b>	C	C
TDT060	8101	AN ..3	TRANSIT DIRECTION, CODED Identification of the point of origin and point of direction.	C	C



TDT070	C401		EXCESS TRANSPORTATION INFORMATION To provide details of reason for, and responsibility for, use of transportation other than normally utilized.	C	C
	8457	AN ..3	Excess transportation reason, coded	M	M
	8459	AN ..3	Indication of reason for excess transportation. Excess transportation responsibility, coded	M	M
	7130	AN ..17	Indication of responsibility for excess transportation. Customer authorization number Customer provided authorization number to allow supplier to ship goods under specific freight conditions. This number will be transmitted back to customer in the dispatch advice message.	C	C
TDT080	C222		TRANSPORT IDENTIFICATION Code and/or name identifying the means of transport.	C	C
	8213	AN ..9	Id. of means of transport identification	C	C
	1131	AN ..3	Identification of the means of transport by name or number. Code list qualifier	C	C
	3055	AN ..3	Identification of a code list. Code list responsible agency, coded	C	C
	8212	AN ..35	Code identifying the agency responsible for a code list. Id. of the means of transport	C	C
	8453	AN ..3	Identification of the means of transport by name or number. Nationality of means of transport, coded Coded name of the country in which a means of transport is registered.	C	C
TDT090	8281	AN ..3	TRANSPORT OWNERSHIP, CODED Code indicating the ownership of the means of transport.	C	C

**Segment:** CPS, Consignment packing sequence  
**Position:** 0380  
**Group:** Segment group 10: CPS-FTX-SG11-SG15  
**Usage:** Mandatory

**Description of codes and data in segment:**

Group	Ref.	Format	Description	M/C	Use
CPS010	7164	AN ..12	HIERARCHICAL ID. NUMBER A unique number assigned by the sender to identify a level within a hierarchical structure. <b>Use: Incremental number for each occurrence within transmission starting from 1.</b>	M	M
CPS020	7166	AN ..12	HIERARCHICAL PARENT ID. Identification number of the next higher hierarchical data segment in a hierarchical structure.	C	C
CPS030	7075	AN ..3	PACKAGING LEVEL, CODED Indication of level of packaging specified. <b>Use: "1" Inner. Level of packing, if it exists, that is immediately subordinate to the intermediate packaging level.</b>	C	C



**Segment:** PAC, Package

**Position:** 0410

**Group:** Segment group 11: PAC-MEA-QTY-SG12-SG13

**Usage:** Mandatory

**Description of codes and data in segment:**

Group	Ref.	Format	Description	M/C	Use
PAC010	7224	N ..8	NUMBER OF PACKAGES Number of individual parts of a shipment either unpacked, or packed in such a way that they cannot be divided without first undoing the packing. <b>Use: Number of boxes/containers of item specified in segment group 10.</b>	C	M
PAC020	C531	AN ..3	PACKAGING DETAILS Packaging level and details, terms and conditions.	C	C
	7075	AN ..3	Packaging level, coded	C	C
	7233	AN ..3	Indication of level of packaging specified. Packaging related information, coded	C	C
	7073	AN ..3	Code giving packaging, handling and marking related information. Packaging terms and conditions, coded Code identifying packaging terms and conditions.	C	C
PAC030	C202		PACKAGE TYPE Type of package by name or by code from a specified source.	C	C
	7065	AN ..17	Type of packages identification Coded description of the form in which goods are presented. <b>Use: Code of type of packaging used.</b>	C	C
	1131	AN ..3	Code list qualifier Identification of a code list.	C	C
	3055	AN ..3	Code list responsible agency, coded	C	C
	7064	AN ..35	Code identifying the agency responsible for a code list. Type of packages Description of the form in which goods are presented.	C	C
PAC040	C402		PACKAGE TYPE IDENTIFICATION Identification of the form in which goods are described.	C	C
	7077	AN ..3	Item description type, coded	M	M
	7064	AN ..35	Code indicating the format of a description. Type of packages	M	M
	7143	AN ..3	Description of the form in which goods are presented. Item number type, coded	C	C
	7064	AN ..35	Identification of the type of item number. Type of packages	C	C
	7143	AN ..3	Description of the form in which goods are presented. Item number type, coded Identification of the type of item number.	C	C



PAC050	C532		RETURNABLE PACKAGE DETAILS Indication of responsibility for payment and load contents of returnable packages.	C	C
	8395	AN ..3	Returnable package freight payment responsibility, coded To indicate responsibility for payment of return freight charges for packaging that is returnable.	C	C
	8393	AN ..3	Returnable package load contents, coded To indicate the composition of goods loaded into a returnable package.	C	C

**Segment:** QTY, Quantity

**Position:** 0430

**Group:** Segment group 11: PAC-MEA-QTY-SG12-SG13

**Usage:** Mandatory

**Description of codes and data in segment:**

Group	Ref.	Format	Description	M/C	Use
QTY010	C186		QUANTITY DETAILS Quantity information in a transaction, qualified when relevant.	M	M
	6063	AN ..3	Quantity qualifier Code giving specific meaning to a quantity. <b>Use: "52" Quantity per pack</b>	M	M
	6060	N ..15	Quantity Numeric value of a quantity. <b>Use: Numeric value expressing quantity per pack.</b>	M	M
	6411	AN ..3	Measure unit qualifier Code giving specific meaning to a quantity. <b>Use: "PCE" Pieces "MTR" Meter "LTR" Liter "KGM" Kilogram</b>	C	C

**Segment:** PCI, Package identification  
**Position:** 0480  
**Group:** Segment group 13: PCI-RFF-DTM-GIR-SG14  
**Usage:** Mandatory

**Description of codes and data in segment:**

Group	Ref.	Format	Description	M/C	Use
PCI010	4233	AN ..3	MARKING INSTRUCTIONS, CODED Code indicating instructions on how specified packages or physical units should be marked. <b>Use: "17" Seller's instructions. Markings as specified by the seller.</b>	C	M
PCI020	C210		MARKS & LABELS	C	C
	7102	AN ..35	Shipping marks on packages in free text; one to ten lines.	M	M
	7102	AN ..35	Shipping marks	C	C
	7102	AN ..35	Marks and numbers identifying individual packages.	C	C
	7102	AN ..35	Shipping marks	C	C
	7102	AN ..35	Marks and numbers identifying individual packages.	C	C
	7102	AN ..35	Shipping marks	C	C
	7102	AN ..35	Marks and numbers identifying individual packages.	C	C
	7102	AN ..35	Shipping marks	C	C
	7102	AN ..35	Marks and numbers identifying individual packages.	C	C
	7102	AN ..35	Shipping marks	C	C
	7102	AN ..35	Marks and numbers identifying individual packages.	C	C
	7102	AN ..35	Shipping marks	C	C
	7102	AN ..35	Marks and numbers identifying individual packages.	C	C
PCI030	8275	AN ..3	CONTAINER/PACKAGE STATUS, CODED	C	C
PCI040	C827		TYPE OF MARKING	C	C
	7511	AN ..3	Specification of the type of marking that reflects the method that was used and the conventions adhered to for marking (e.g. of packages). Type of marking, coded To specify the type of marking that reflects the method and the conventions adhered to for marking. <b>Use: "M" Homogenous load shipment</b> <b>"G" Mixed load shipment</b> <b>"S" Single package/container</b>	M	M
	1131	AN ..3	Code list qualifier	C	C
	3055	AN ..3	Identification of a code list. Code list responsible agency, coded Code identifying the agency responsible for a code list. <b>Use: "92" Assigned by buyer or buyer's agent</b>	C	C

**Segment:** RFF, Reference  
**Position:** 0490  
**Group:** Segment group 13: PCI-RFF-DTM-GIR-SG14  
**Usage:** Conditional

**Description of codes and data in segment:**

Group	Ref.	Format	Description	M/C	Use
RFF010	C506		REFERENCE	M	M
	1153	AN ..3	Identification of a reference. Reference qualifier Code giving specific meaning to a reference segment or a reference number. <b>Use: "AAT" Master label number. Identifies the master label number of any package type.</b>	M	M
	1154	AN ..35	Reference number Identification number the nature and function of which can be qualified by an entry in data element 1153 Reference qualifier. <b>Use: Master label number.</b>	C	M
	1156	AN ..6	Line number Number of the line in the document/message referenced in 1154 Reference number.	C	C
	4000	AN ..35	Reference version number To uniquely identify a reference by its revision number.	C	C

DRAFT INTERNAL DOCUMENT



**Segment:** GIR, Related identification numbers  
**Position:** 0510  
**Group:** Segment group 13: PCI-RFF-DTM-GIR-SG14  
**Usage:** Mandatory

**Description of codes and data in segment:**

Group	Ref.	Format	Description	M/C	Use
GIR010	7297	AN ..3	SET IDENTIFICATION QUALIFIER <b>Use: "3" Package. Related numbers identifying a package such as a bar code label number related to a kanban card number, etc.</b>	M	M
GIR020	C206 7402	AN ..35	IDENTIFICATION NUMBER Identity number The number given to an object for its unique identification. <b>Use: Serial number specified on barcode label.</b>	M M	M M
	7405	AN ..3	Identity number qualifier Code specifying the type/source of identity number. <b>Use: "AW" Serial shipping container code A single unique serial number which identifies shipping containers or shipping packages.</b>	C	C
	4405	AN ..3	Status, coded Provides information regarding a status.	C	C
GIR030	C206 7402	AN ..35	IDENTIFICATION NUMBER Identity number The number given to an object for its unique identification.	C M	C M
	7405	AN ..3	Identity number qualifier Code specifying the type/source of identity number.	C	C
	4405	AN ..3	Status, coded Provides information regarding a status.	C	C
GIR040	C206 7402	AN ..35	IDENTIFICATION NUMBER Identity number The number given to an object for its unique identification.	C M	C M
	7405	AN ..3	Identity number qualifier Code specifying the type/source of identity number.	C	C
	4405	AN ..3	Status, coded Provides information regarding a status.	C	C
GIR050	C206 7402	AN ..35	IDENTIFICATION NUMBER Identity number The number given to an object for its unique identification.	C M	C M
	7405	AN ..3	Identity number qualifier Code specifying the type/source of identity number.	C	C
	4405	AN ..3	Status, coded Provides information regarding a status.	C	C
GIR060	C206 7402	AN ..35	IDENTIFICATION NUMBER Identity number The number given to an object for its unique identification.	C M	C M
	7405	AN ..3	Identity number qualifier Code specifying the type/source of identity number.	C	C
	4405	AN ..3	Status, coded Provides information regarding a status.	C	C



**Segment:** LIN, Line item

**Position:** 0560

**Group:** Segment group 15: LIN-PIA-IMD-MEA-QTY-ALI-GIN-GIR-DLM-DTM-NAD-TDT-HAN-FTX-MOA-SG16-SG17-SG18-SG19-SG20-SG23

**Usage:** Mandatory

**Description of codes and data in segment:**

Group	Ref.	Format	Description	M/C	Use
LIN010	1082	AN ..6	LINE ITEM NUMBER Serial number designating each separate item within a series of articles.	C	C
LIN020	1229	AN ..3	ACTION REQUEST/NOTIFICATION, CODED Code specifying the action to be taken or already taken.	C	C
LIN030	C212		ITEM NUMBER IDENTIFICATION Goods identification for a specified source.	C	M
	7140	AN ..35	Item number A number allocated to a group or item. <b>Use: Methode's item number</b>	C	M
	7143	AN ..3	Item number type, coded Identification of the type of item number. <b>Use: "IN" Buyer's item number</b>	C	M
	1131	AN ..3	Code list qualifier Identification of a code list.	C	C
	3055	AN ..3	Code list responsible agency, coded Code identifying the agency responsible for a code list.	C	C
LIN040	C829		SUB-LINE INFORMATION To provide an indication that a segment or segment group is used to contain sub-line or sub-line item information and to optionally enable the sub-line to be identified.	C	C
	5495	AN ..3	Sub-line indicator, coded Indication that the segment and/or segment group is used for sub-line item information.	C	C
	1082	AN ..6	Line item number Serial number designating each separate item within a series of articles.	C	C
LIN050	1222	N ..2	CONFIGURATION LEVEL Number indicating the level of an object which is in a hierarchy.	C	C
LIN060	7083	AN ..3	CONFIGURATION, CODED Code indicating the status of the sub-line item in the configuration.	C	C





**Segment:** QTY, Quantity

**Position:** 0600

**Group:** Segment group 15: LIN-PIA-IMD-MEA-QTY-ALI-GIN-GIR-DLM-DTM-NAD-TDT-HAN-FTX-MOA-SG16-SG17-SG18-SG19-SG20-SG23

**Usage:** Mandatory

**Description of codes and data in segment:**

Group	Ref.	Format	Description	M/C	Use
QTY010	C186		QUANTITY DETAILS Quantity information in a transaction, qualified when relevant.	M	M
	6063	AN ..3	Quantity qualifier Code giving specific meaning to a quantity. <b>Use: "12" Despatch quantity. Quantity despatched by the seller.</b>	M	M
	6060	N ..15	Quantity Numeric value of a quantity. <b>Use: Numeric value expressing quantity of item despatched.</b>	M	M
	6411	AN ..3	Measure unit qualifier Code giving specific meaning to a quantity. <b>Use: "PCE" Pieces "MTR" Meter "LTR" Liter "KGM" Kilogram</b>	C	C

**Segment:** ALI, Additional information

**Position:** 0610

**Group:** Segment group 15: LIN-PIA-IMD-MEA-QTY-ALI-GIN-GIR-DLM-DTM-NAD-TDT-HAN-FTX-MOA-SG16-SG17-SG18-SG19-SG20-SG23

**Usage:** Conditional

**Description of codes and data in segment:**

Group	Ref.	Format	Description	M/C	Use
ALI010	3239	AN ..3	COUNTRY OF ORIGIN, CODED Country in which the goods have been produced or manufactured, according to criteria laid down for the purposes of application of the Customs tariff, of quantitative restrictions, or of any other measure related to trade. <b>Use: ISO 3166-1 two alpha country code.</b>	C	M
ALI020	9213	AN ..3	TYPE OF DUTY REGIME, CODED Identification of the statement of the full/preferential regime according to which duty is assessed.	C	C
ALI030	4183	AN ..3	SPECIAL CONDITIONS, CODED Indication of a specific condition.	C	C
ALI040	4183	AN ..3	SPECIAL CONDITIONS, CODED Indication of a specific condition.	C	C
ALI050	4183	AN ..3	SPECIAL CONDITIONS, CODED Indication of a specific condition.	C	C
ALI060	4183	AN ..3	SPECIAL CONDITIONS, CODED Indication of a specific condition.	C	C
ALI070	4183	AN ..3	SPECIAL CONDITIONS, CODED Indication of a specific condition.	C	C



Segment: RFF, Reference

Position: 0720

Group: Segment group 16: RFF-NAD-CTA-DTM

Usage: Mandatory

Description of codes and data in segment:

Group	Ref.	Format	Description	M/C	Use
RFF010	C506		REFERENCE	M	M
	1153	AN ..3	Identification of a reference. Reference qualifier Code giving specific meaning to a reference segment or a reference number. <b>Use: "ON" Order number (purchase). Reference number assigned by the buyer to an order.</b>	M	M
	1154	AN ..35	Reference number Identification number the nature and function of which can be qualified by an entry in data element 1153 Reference qualifier. <b>Use: Methode's order number for referenced item.</b>	C	M
	1156	AN ..6	Line number Number of the line in the document/message referenced in 1154	C	C
	4000	AN ..35	Reference number. Reference version number To uniquely identify a reference by its revision number.	C	C

DRAFT INTERNAL DOCUMENT



Segment: UNT, Message trailer

Position: 1040

Group:

Usage: Mandatory

Description of codes and data in segment:

Group	Ref.	Format	Description	M/C	Use
UNT010	0074	N ..6	NUMBER OF SEGMENTS IN THE MESSAGE Control count including UNH and UNT. <b>Use: Count of segments from UNH to UNT</b>	M	M
UNT020	0062	AN ..14	MESSAGE REFERENCE NUMBER <b>Use: Shall be identical to 0062 in UNH</b>	M	M

Segment: UNZ, Interchange trailer

Position: 1050

Group:

Usage: Mandatory

Description of codes and data in segment:

Group	Ref.	Format	Description	M/C	Use
UNZ010	0036	N ..6	INTERCHANGE CONTROL COUNT The count of the number of messages or, if used, the number of functional groups in the interchange. One of these counts shall appear. <b>Use: "1"</b>	M	M
UNZ020	0020	AN ..14	INTERCHANGE CONTROL REFERENCE <b>Use: Shall be identical to 0020 in UNB segment</b>	M	M



**Sample Message**

DRAFT INTERNAL DOCUMENT